



[Go to Product page](#)

Datasheet for ABIN203497

## anti-BDKRB2 antibody (N-Term)

### 1 Image

#### Overview

|                      |                                       |
|----------------------|---------------------------------------|
| Quantity:            | 100 µL                                |
| Target:              | BDKRB2                                |
| Binding Specificity: | N-Term                                |
| Reactivity:          | Human, Cow                            |
| Host:                | Rabbit                                |
| Clonality:           | Polyclonal                            |
| Conjugate:           | This BDKRB2 antibody is un-conjugated |
| Application:         | Western Blotting (WB)                 |

#### Product Details

|                       |  |
|-----------------------|--|
| Immunogen:            | Synthetic peptide from N-Terminus of human BDKRB2 (P30411, NP_000614). Percent identity by BLAST analysis: Human, Gorilla, Gibbon, Monkey (100%), Marmoset (92%), Bat (85%), Galago (84%).<br><br>Type of Immunogen: Synthetic peptide |
| Isotype:              | IgG  |
| Specificity:          | Human BDKRB2 / BK-2  |
| Predicted Reactivity: | Percent identity by BLAST analysis:  |
| Purification:         | Protein A purified   |

## Target Details

---

|                   |  |
|-------------------|--|
| Target:           | BDKRB2   |
| Alternative Name: | BDKRB2/Bradykinin B2 Receptor ( <a href="#">BDKRB2 Products</a> )  |
| Background:       | Name/Gene ID: BDKRB2<br>Subfamily: Bradykinin<br>Family: GPCR<br><br>Synonyms: BDKRB2, BK-2 receptor, Bradykinin type-2 receptor, B2R, Bradykinin B2 receptor, BRB2, BK-2R, BK-2Rs, BK2, B2 bradykinin receptor, B2bkr, BK-2, BKR2, Bradykinin receptor B2 |
| Gene ID:          | 624  |
| NCBI Accession:   | <a href="#">NP_000614</a>  |
| UniProt:          | <a href="#">P30411</a>   |
| Pathways:         | <a href="#">ACE Inhibitor Pathway</a> , <a href="#">Negative Regulation of intrinsic apoptotic Signaling</a>   |

## Application Details

---

|                    |                                   |
|--------------------|-----------------------------------|
| Application Notes: | Approved: WB (5 µg/mL)            |
| Comment:           | Target Species of Antibody: Human |
| Restrictions:      | For Research Use only             |

## Handling

---

|                  |   |
|------------------|---|
| Format:          | Lyophilized   |
| Reconstitution:  | After adding water, will consist of PBS buffer with 2 % sucrose   |
| Concentration:   | Lot specific  |
| Buffer:          | Lyophilized from PBS with 2 % sucrose   |
| Handling Advice: | Avoid repeat freeze-thaw cycles.  |
| Storage:         | 4 °C,-20 °C   |
| Storage Comment: | Long term: -20°C, the use of 50% glycerol is recommended if storing aliquots in -20°C for long term use (up to 1 year)<br>Short term (less than 1 week): 4°C. Avoid freeze-thaw cycles. |

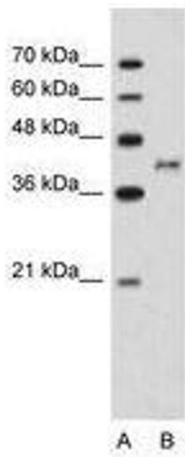


Image 1.