

Datasheet for ABIN203508
anti-RAD23A antibody (AA 201-250)



[Go to Product page](#)

2 Images

Overview

Quantity:	100 µL
Target:	RAD23A
Binding Specificity:	AA 201-250
Reactivity:	Human, Mouse, Rat, Dog, Horse, Rabbit, Cow, Pig, Bat, Monkey
Host:	Rabbit
Clonality:	Polyclonal
Conjugate:	This RAD23A antibody is un-conjugated
Application:	Western Blotting (WB), Immunohistochemistry (IHC), Immunohistochemistry (Paraffin-embedded Sections) (IHC (p))

Product Details

Immunogen:	Synthetic peptide located between aa201-250 of human RAD23A (P54725, NP_005044). Percent identity by BLAST analysis: Human, Chimpanzee, Gorilla, Gibbon, Marmoset, Mouse, Rat, Dog, Bovine, Bat, Rabbit, Horse, Pig (100%), Galago, Elephant, Guinea pig (92%), Opossum (85%). Type of Immunogen: Synthetic peptide
Isotype:	IgG
Specificity:	Human RAD23A / HHR23A
Predicted Reactivity:	Percent identity by BLAST analysis: Human, Mouse, Rat, Dog, Horse, Pig (100%) Guinea pig (92%).

Product Details

Purification: Protein A purified

Target Details

Target: RAD23A

Alternative Name: RAD23A / HHR23A ([RAD23A Products](#))

Background: Name/Gene ID: RAD23A

Synonyms: RAD23A, HR23A, HHR23A, RAD23, yeast homolog, A

Gene ID: 5886

NCBI Accession: [NP_005044](#)

UniProt: [P54725](#)

Pathways: [DNA Damage Repair](#)

Application Details

Application Notes: Approved: IHC, IHC-P, WB (2.5 µg/mL)

Comment: Target Species of Antibody: Human

Restrictions: For Research Use only

Handling

Format: Lyophilized

Reconstitution: After adding water, will consist of PBS buffer with 2 % sucrose

Concentration: Lot specific

Buffer: Lyophilized from PBS with 2 % sucrose

Handling Advice: Avoid repeat freeze-thaw cycles.

Storage: 4 °C, -20 °C

Storage Comment: Long term: -20°C, the use of 50% glycerol is recommended if storing aliquots in -20°C for long term use (up to 1 year)

Short term (less than 1 week): 4°C. Avoid freeze-thaw cycles.

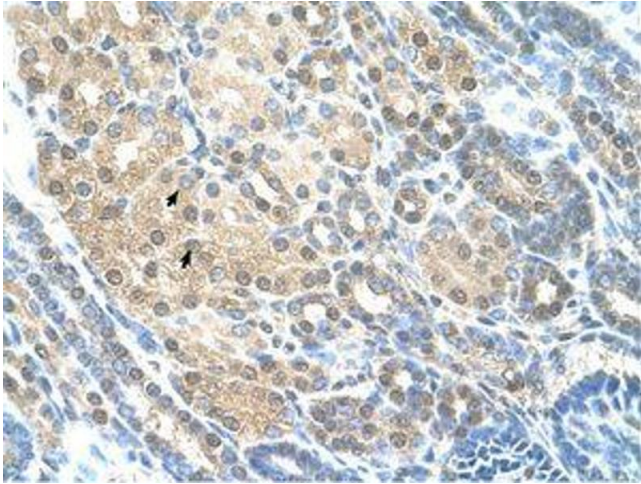


Image 1.

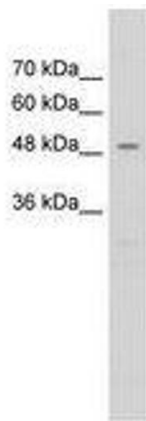


Image 2.