

Datasheet for ABIN203516
anti-RGS2 antibody (AA 101-150)[Go to Product page](#)

1 Image

Overview

Quantity:	100 µL
Target:	RGS2
Binding Specificity:	AA 101-150
Reactivity:	Human, Rat, Mouse, Cow, Dog, Guinea Pig, Horse, Rabbit, Pig, Bat, Chicken, Monkey
Host:	Rabbit
Clonality:	Polyclonal
Conjugate:	This RGS2 antibody is un-conjugated
Application:	Western Blotting (WB)

Product Details

Immunogen:	Synthetic peptide located between aa101-150 of mouse Rgs2 (O08849, NP_033087). Percent identity by BLAST analysis: Human, Chimpanzee, Gorilla, Gibbon, Monkey, Galago, Marmoset, Mouse, Rat, Elephant, Panda, Dog, Bovine, Bat, Rabbit, Horse, Pig, Guinea pig, Turkey, Chicken (100%), Opossum, Zebra finch (92%). Type of Immunogen: Synthetic peptide
Isotype:	IgG
Specificity:	Mouse RGS2
Predicted Reactivity:	Percent identity by BLAST analysis: Human, Mouse, Rat, Dog, Bovine, Horse, Pig, Chicken (100%).
Purification:	Protein A purified

Target Details

Target:	RGS2
Alternative Name:	RGS2 (RGS2 Products)
Background:	Name/Gene ID: RGS2 Family: Regulator of G-protein signalling Synonyms: RGS2, G0S8
Gene ID:	5997
NCBI Accession:	NP_033087
UniProt:	P41220
Pathways:	Myometrial Relaxation and Contraction , Regulation of G-Protein Coupled Receptor Protein Signaling , Brown Fat Cell Differentiation

Application Details

Application Notes:	Approved: WB (1.25 µg/mL)
Comment:	Target Species of Antibody: Mouse
Restrictions:	For Research Use only

Handling

Format:	Lyophilized
Reconstitution:	After adding water, will consist of PBS buffer with 2 % sucrose
Concentration:	Lot specific
Buffer:	Lyophilized from PBS with 2 % sucrose
Handling Advice:	Avoid repeat freeze-thaw cycles.
Storage:	4 °C, -20 °C
Storage Comment:	Long term: -20°C, the use of 50% glycerol is recommended if storing aliquots in -20°C for long term use (up to 1 year) Short term (less than 1 week): 4°C. Avoid freeze-thaw cycles.

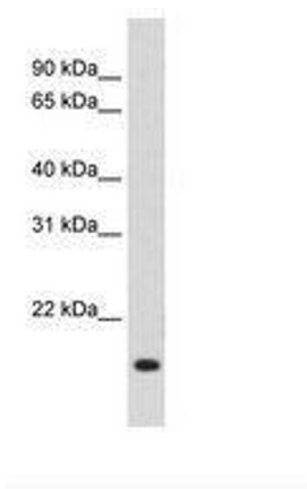


Image 1.