

Datasheet for ABIN203520  
**anti-RNF121 antibody (AA 101-150)**



[Go to Product page](#)

2 Images

## Overview

Quantity:	100 µL
Target:	RNF121
Binding Specificity:	AA 101-150
Reactivity:	Human, Rat, Mouse, Dog, Cow, Rabbit, Guinea Pig, Horse, Monkey, Bat, Pig
Host:	Rabbit
Clonality:	Polyclonal
Conjugate:	This RNF121 antibody is un-conjugated
Application:	Western Blotting (WB), Immunohistochemistry (IHC), Immunohistochemistry (Paraffin-embedded Sections) (IHC (p))

## Product Details

Immunogen:	Synthetic peptide located between aa101-150 of human RNF121. Percent identity by BLAST analysis: Human, Chimpanzee, Gorilla, Gibbon, Monkey, Galago, Marmoset, Mouse, Rat, Panda, Dog, Bovine, Bat, Rabbit, Horse, Pig, Opossum, Guinea pig, Zebra finch (100%), Elephant, Chicken (92%), Salmon (90%), Xenopus (85%).  Type of Immunogen: Synthetic peptide
Isotype:	IgG
Specificity:	Human RNF121
Predicted Reactivity:	Percent identity by BLAST analysis: Human, Mouse, Rat, Dog, Bovine, Horse, Pig, Guinea pig (100%) Chicken (92%).

## Product Details

---

Purification: Protein A purified

## Target Details

---

Target: RNF121

Alternative Name: RNF121 ([RNF121 Products](#))

Background: Name/Gene ID: RNF121

Synonyms: RNF121, Ring finger protein 121

Gene ID: 55298

UniProt: [Q9H920](#)

Pathways: [ER-Nucleus Signaling](#)

## Application Details

---

Application Notes: Approved: IHC, IHC-P, WB (1.25 µg/mL)

Comment: Target Species of Antibody: Human

Restrictions: For Research Use only

## Handling

---

Format: Lyophilized

Reconstitution: After adding water, will consist of PBS buffer with 2 % sucrose

Concentration: Lot specific

Buffer: Lyophilized from PBS with 2 % sucrose

Handling Advice: Avoid repeat freeze-thaw cycles.

Storage: 4 °C, -20 °C

Storage Comment: Long term: -20°C, the use of 50% glycerol is recommended if storing aliquots in -20°C for long term use (up to 1 year)

Short term (less than 1 week): 4°C. Avoid freeze-thaw cycles.

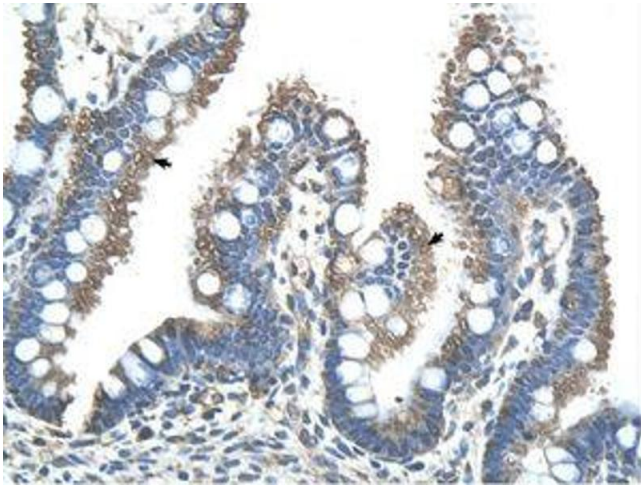


Image 1.

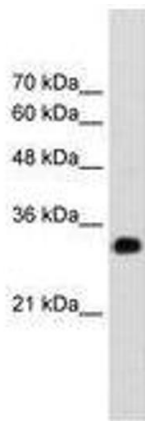


Image 2.