



[Go to Product page](#)

Datasheet for ABIN203527

anti-PRP19 antibody (AA 151-200)

2 Images

Overview

Quantity:	100 µL
Target:	PRP19 (PRPF19)
Binding Specificity:	AA 151-200
Reactivity:	Human, Mouse, Rat, Cow, Dog, Horse, Rabbit, Zebrafish (Danio rerio), Guinea Pig, Pig, Bat, Monkey, Chicken
Host:	Rabbit
Clonality:	Polyclonal
Conjugate:	This PRP19 antibody is un-conjugated
Application:	Western Blotting (WB), Immunohistochemistry (IHC), Immunohistochemistry (Paraffin-embedded Sections) (IHC (p))

Product Details

Immunogen:	Synthetic peptide located between aa151-200 of human PRPF19 (Q9UMS4, NP_055317). Percent identity by BLAST analysis: Human, Chimpanzee, Gorilla, Gibbon, Monkey, Galago, Marmoset, Mouse, Rat, Elephant, Dog, Bovine, Bat, Rabbit, Horse, Pig, Opossum, Guinea pig, Turkey, Zebra finch, Chicken, Platypus, Salmon, Stickleback, Zebrafish (100%), Xenopus (92%), Drosophila, Beetle (85%). Type of Immunogen: Synthetic peptide
Isotype:	IgG
Specificity:	Human PRPF19

Product Details

Predicted Reactivity: Percent identity by BLAST analysis: Human, Mouse, Rat, Dog, Rabbit, Horse, Pig (100%)
Xenopus (92%).

Purification: Protein A purified

Target Details

Target: PRP19 (PRPF19)

Alternative Name: PRPF19 / PRP19 ([PRPF19 Products](#))

Background: Name/Gene ID: PRPF19

Synonyms: PRPF19, HPSO4, Senescence evasion factor, NMP200, Nuclear matrix protein 200,
Pre-mRNA-processing factor 19, PRP19/PSO4 homolog, PRP19, PSO4, SNEV, UBOX4

Gene ID: 27339

NCBI Accession: [NP_055317](#)

UniProt: [Q9UMS4](#)

Pathways: [Ribonucleoprotein Complex Subunit Organization](#)

Application Details

Application Notes: Approved: IHC, IHC-P, WB (2.5 µg/mL)

Comment: Target Species of Antibody: Human

Restrictions: For Research Use only

Handling

Format: Lyophilized

Reconstitution: After adding water, will consist of PBS buffer with 2 % sucrose

Concentration: Lot specific

Buffer: Lyophilized from PBS with 2 % sucrose

Handling Advice: Avoid repeat freeze-thaw cycles.

Storage: 4 °C, -20 °C

Storage Comment: Long term: -20°C, the use of 50% glycerol is recommended if storing aliquots in -20°C for long

Handling

term use (up to 1 year)

Short term (less than 1 week): 4°C. Avoid freeze-thaw cycles.

Images

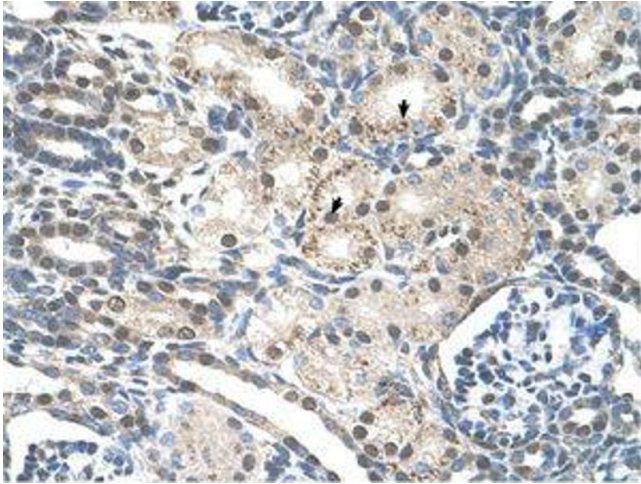


Image 1.



Image 2.