



[Go to Product page](#)

Datasheet for ABIN203536
anti-LONRF1 antibody (N-Term)

2 Images

Overview

Quantity:	100 µL
Target:	LONRF1
Binding Specificity:	N-Term
Reactivity:	Human, Mouse, Rat
Host:	Rabbit
Clonality:	Polyclonal
Conjugate:	This LONRF1 antibody is un-conjugated
Application:	Western Blotting (WB), Immunohistochemistry (IHC), Immunohistochemistry (Paraffin-embedded Sections) (IHC (p))

Product Details

Immunogen:	Synthetic peptide from N-Terminus of human LONRF1 (Q17RB8, NP_689484). Percent identity by BLAST analysis: Human (100%), Gorilla (92%), Mouse, Rat (85%). Type of Immunogen: Synthetic peptide
Isotype:	IgG
Specificity:	Human LONRF1
Predicted Reactivity:	Percent identity by BLAST analysis: Mouse, Rat (85%).
Purification:	Protein A purified

Target Details

Target:	LONRF1
Alternative Name:	LONRF1 (LONRF1 Products)
Background:	Name/Gene ID: LONRF1 Synonyms: LONRF1, RNF191, RING finger protein 191
Gene ID:	91694
NCBI Accession:	NP_689484
UniProt:	Q17RB8

Application Details

Application Notes:	Approved: IHC, IHC-P, WB (2.5 µg/mL)
Comment:	Target Species of Antibody: Human
Restrictions:	For Research Use only

Handling

Format:	Lyophilized
Reconstitution:	After adding water, will consist of PBS buffer with 2 % sucrose
Concentration:	Lot specific
Buffer:	Lyophilized from PBS with 2 % sucrose
Handling Advice:	Avoid repeat freeze-thaw cycles.
Storage:	4 °C, -20 °C
Storage Comment:	Long term: -20°C, the use of 50% glycerol is recommended if storing aliquots in -20°C for long term use (up to 1 year) Short term (less than 1 week): 4°C. Avoid freeze-thaw cycles.

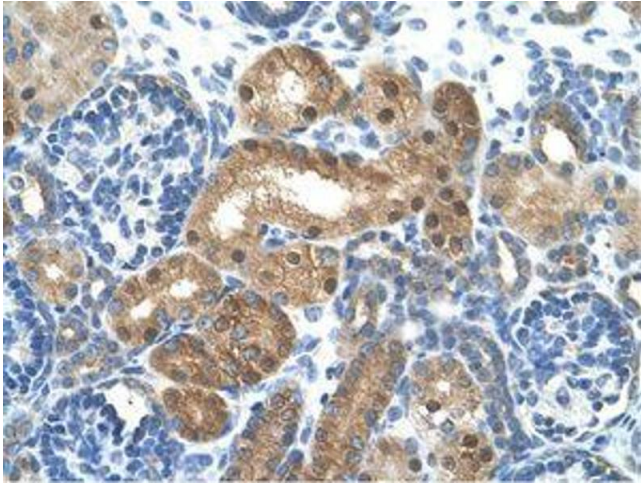


Image 1.

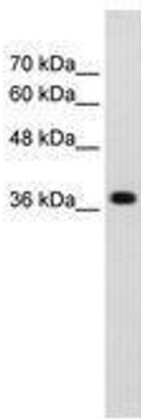


Image 2.