



[Go to Product page](#)

Datasheet for ABIN204950

anti-KCTD6 antibody (AA 21-70)

1 Image

Overview

Quantity:	100 µL
Target:	KCTD6
Binding Specificity:	AA 21-70
Reactivity:	Human
Host:	Rabbit
Clonality:	Polyclonal
Conjugate:	This KCTD6 antibody is un-conjugated
Application:	Western Blotting (WB), Immunohistochemistry (IHC), Immunohistochemistry (Paraffin-embedded Sections) (IHC (p))

Product Details

Immunogen:	Synthetic peptide located between aa21-70 of human KCTD6 (Q8NC69, NP_699162). Percent identity by BLAST analysis: Human, Gorilla, Gibbon, Monkey, Galago, Marmoset, Mouse, Rat, Elephant, Panda, Dog, Bovine, Bat, Rabbit, Horse, Pig, Guinea pig, Salmon, Stickleback, Pufferfish, Zebrafish (92%), Opossum, Turkey, Zebra finch, Chicken, Lizard, Xenopus (85%). Type of Immunogen: Synthetic peptide
Isotype:	IgG
Specificity:	Human KCTD6
Predicted Reactivity:	Percent identity by BLAST analysis: Human, Mouse, Rat, Bovine, Zebrafish (92%) Chicken (85%).
Purification:	Protein A purified

Target Details

Target:	KCTD6
Alternative Name:	KCTD6 (KCTD6 Products)
Background:	Name/Gene ID: KCTD6 Subfamily: Transient Receptor Potential Channel Family: Ion Channel Synonyms: KCTD6, KCASH3
Gene ID:	200845
NCBI Accession:	NP_699162
UniProt:	Q8NC69

Application Details

Application Notes:	Approved: IHC, IHC-P, WB (5 µg/mL)
Comment:	Target Species of Antibody: Human
Restrictions:	For Research Use only

Handling

Format:	Lyophilized
Reconstitution:	After adding water, will consist of PBS buffer with 2 % sucrose
Concentration:	Lot specific
Buffer:	Lyophilized from PBS with 2 % sucrose
Storage:	4 °C, -20 °C
Storage Comment:	Long term: -20°C, the use of 50% glycerol is recommended if storing aliquots in -20°C for long term use (up to 1 year) Short term (less than 1 week): 4°C. Avoid freeze-thaw cycles.

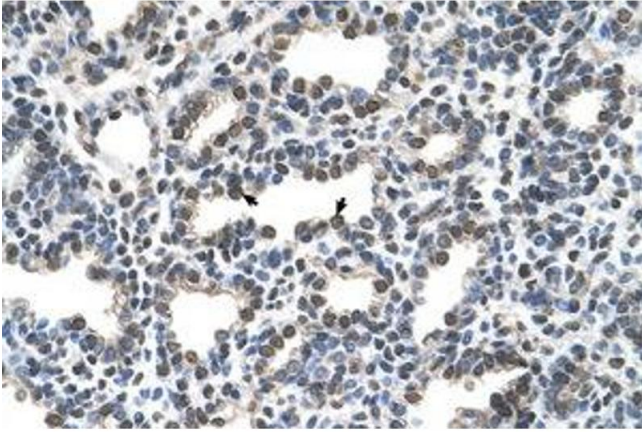


Image 1.