

Datasheet for ABIN204954
anti-MOV10 antibody (C-Term)

2 Images



[Go to Product page](#)

Overview

Quantity:	100 µL
Target:	MOV10
Binding Specificity:	C-Term
Reactivity:	Human, Cow, Guinea Pig, Horse, Pig, Rabbit, Monkey
Host:	Rabbit
Clonality:	Polyclonal
Conjugate:	This MOV10 antibody is un-conjugated
Application:	Western Blotting (WB), Immunohistochemistry (IHC), Immunohistochemistry (Paraffin-embedded Sections) (IHC (p))

Product Details

Immunogen:	Synthetic peptide from C-Terminus of human MOV10 (Q9HCE1, NP_066014). Percent identity by BLAST analysis: Human, Chimpanzee, Gorilla, Gibbon, Monkey, Marmoset, Elephant, Bovine, Rabbit, Horse, Pig (100%), Galago, Mouse, Rat, Dog (92%), Panda, Guinea pig (85%). Type of Immunogen: Synthetic peptide
Isotype:	IgG
Specificity:	Human MOV10
Predicted Reactivity:	Percent identity by BLAST analysis: Human, Bovine, Rabbit, Horse, Pig (100%) Mouse, Rat, Dog (92%) Guinea pig (85%).
Purification:	Protein A purified

Target Details

Target:	MOV10
Alternative Name:	MOV10 (MOV10 Products)
Background:	Name/Gene ID: MOV10 Synonyms: MOV10, FSAP113, Gb110, KIAA1631, Putative helicase MOV-10
Gene ID:	4343
NCBI Accession:	NP_066014
UniProt:	Q9HCE1
Pathways:	Fc-epsilon Receptor Signaling Pathway , EGFR Signaling Pathway , Neurotrophin Signaling Pathway , SARS-CoV-2 Protein Interactome

Application Details

Application Notes:	Approved: IHC, IHC-P, WB (1.25 µg/mL)
Comment:	Target Species of Antibody: Human
Restrictions:	For Research Use only

Handling

Format:	Lyophilized
Reconstitution:	Distilled water
Concentration:	Lot specific
Buffer:	Lyophilized from PBS with 2 % sucrose
Handling Advice:	Avoid repeat freeze-thaw cycles.
Storage:	4 °C,-20 °C
Storage Comment:	Long term: -20°C, the use of 50% glycerol is recommended if storing aliquots in -20°C for long term use (up to 1 year) Short term (less than 1 week): 4°C. Avoid freeze-thaw cycles.

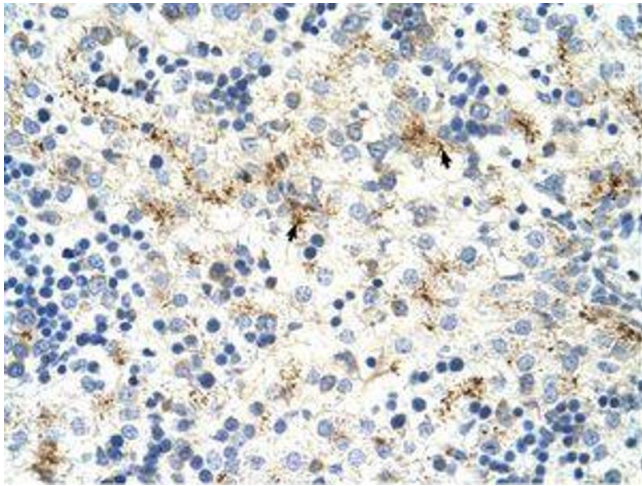


Image 1.

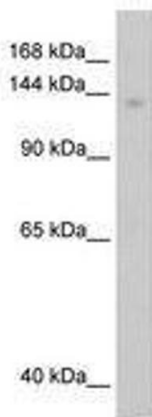


Image 2.