



Datasheet for ABIN204960
anti-PRMT8 antibody (C-Term)



[Go to Product page](#)

1 Image

Overview

Quantity:	100 µL
Target:	PRMT8
Binding Specificity:	C-Term
Reactivity:	Human, Mouse, Rat, Dog, Cow, Guinea Pig, Horse, Rabbit, Bat, Monkey, Pig
Host:	Rabbit
Clonality:	Polyclonal
Conjugate:	This PRMT8 antibody is un-conjugated
Application:	Western Blotting (WB)

Product Details

Immunogen:	Synthetic peptide from C-Terminus of human PRMT8 (Q9NR22, NP_062828). Percent identity by BLAST analysis: Human, Chimpanzee, Gorilla, Gibbon, Monkey, Galago, Marmoset, Mouse, Rat, Elephant, Panda, Dog, Bovine, Bat, Rabbit, Horse, Pig, Opossum, Guinea pig, Zebra finch, Platypus (100%), Turkey, Chicken, Xenopus, Zebrafish (92%), Catfish, Salmon, Stickleback (85%), Orangutan, Hamster (84%). Type of Immunogen: Synthetic peptide
Isotype:	IgG
Specificity:	Human PRMT8
Predicted Reactivity:	Percent identity by BLAST analysis: Human, Rat, Dog, Bovine, Horse, Pig, Guinea pig (100%) Chicken (92%).

Product Details

Purification: Protein A purified

Target Details

Target: PRMT8

Alternative Name: PRMT8 ([PRMT8 Products](#))

Background: Name/Gene ID: PRMT8

Synonyms: PRMT8, HRMT1L3, HRMT1L4

Gene ID: 56341

NCBI Accession: [NP_062828](#)

UniProt: [Q9NR22](#)

Application Details

Application Notes: Approved: WB (2.5 µg/mL)

Comment: Target Species of Antibody: Human

Restrictions: For Research Use only

Handling

Format: Lyophilized

Reconstitution: After adding water, will consist of PBS buffer with 2 % sucrose

Concentration: Lot specific

Buffer: Lyophilized from PBS with 2 % sucrose

Handling Advice: avoid freeze thaw cycles.

Storage: 4 °C, -20 °C

Storage Comment: Long term: -20°C, the use of 50% glycerol is recommended if storing aliquots in -20°C for long term use (up to 1 year)

Short term (less than 1 week): 4°C. Avoid freeze-thaw cycles.

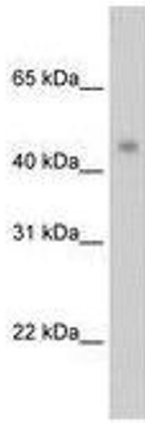


Image 1.