



[Go to Product page](#)

Datasheet for ABIN204980  
**anti-DHODH antibody (AA 112-161)**

1 Image

Overview

Quantity:	100 µL
Target:	DHODH
Binding Specificity:	AA 112-161
Reactivity:	Human, Mouse, Rat, Dog, Horse, Zebrafish (Danio rerio), Guinea Pig, Bat, Hamster
Host:	Rabbit
Clonality:	Polyclonal
Conjugate:	This DHODH antibody is un-conjugated
Application:	Western Blotting (WB)

Product Details

Immunogen:	Synthetic peptide located between aa112-161 of human DHODH (Q02127, NP_001352). Percent identity by BLAST analysis: Human, Chimpanzee, Gorilla, Orangutan, Gibbon, Monkey, Mouse, Rat, Hamster, Dog, Bat, Opossum, Platypus, Salmon, Zebrafish (100%), Marmoset, Elephant, Bovine, Rabbit, Pig, Turkey, Zebra finch, Chicken (92%), Galago, Horse, Xenopus (85%), Sea squirt, Drosophila (84%), Stickleback (83%).  Type of Immunogen: Synthetic peptide
Isotype:	IgG
Specificity:	Human DHODH
Predicted Reactivity:	Percent identity by BLAST analysis: Human, Mouse, Rat, Dog, Zebrafish (100%) Bovine, Rabbit, Pig, Chicken (92%) Horse, Xenopus (85%).

## Product Details

---

Purification: Protein A purified

## Target Details

---

Target: DHODH

Alternative Name: DHODH ([DHODH Products](#))

Background: Name/Gene ID: DHODH

Synonyms: DHODH, Dihydroorotate dehydrogenase, Dihydroorotate oxidase, Human complement of yeast URA1, POADS, URA1, DHodehase

Gene ID: 1723

NCBI Accession: [NP\\_001352](#)

UniProt: [Q02127](#)

Pathways: [Ribonucleoside Biosynthetic Process](#), [Protein targeting to Nucleus](#)

## Application Details

---

Application Notes: Approved: WB (2.5 µg/mL)

Comment: Target Species of Antibody: Human

Restrictions: For Research Use only

## Handling

---

Format: Lyophilized

Reconstitution: After adding water, will consist of PBS buffer with 2 % sucrose

Concentration: Lot specific

Buffer: Lyophilized from PBS with 2 % sucrose

Storage: 4 °C,-20 °C

Storage Comment: Long term: -20°C, the use of 50% glycerol is recommended if storing aliquots in -20°C for long term use (up to 1 year)

Short term (less than 1 week): 4°C. Avoid freeze-thaw cycles.

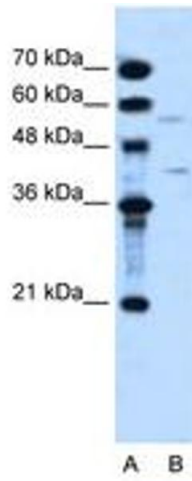


Image 1.