



[Go to Product page](#)

Datasheet for ABIN204986  
**anti-PPAP2A antibody (AA 136-185)**

1 Image

### Overview

Quantity:	100 µL
Target:	PPAP2A
Binding Specificity:	AA 136-185
Reactivity:	Human, Rat, Mouse, Guinea Pig, Dog, Horse, Zebrafish (Danio rerio), Cow, Monkey, Bat, Chicken, Pig, Xenopus laevis
Host:	Rabbit
Clonality:	Polyclonal
Conjugate:	This PPAP2A antibody is un-conjugated
Application:	Western Blotting (WB)

### Product Details

Immunogen:	Synthetic peptide located between aa136-185 of human PPAP2A (O14494-2, NP_795714). Percent identity by BLAST analysis: Human, Chimpanzee, Gorilla, Gibbon, Galago, Marmoset, Mouse, Rat, Elephant, Panda, Dog, Bovine, Bat, Horse, Pig, Opossum, Guinea pig, Turkey, Zebra finch, Chicken, Xenopus, Salmon, Zebrafish (100%), Rabbit, Platypus (92%).  Type of Immunogen: Synthetic peptide
Isotype:	IgG
Specificity:	Human PPAP2A
Predicted Reactivity:	Percent identity by BLAST analysis: Human, Rat, Dog, Bovine, Horse, Guinea pig, Chicken, Xenopus (100%).

## Product Details

---

Purification: Protein A purified

## Target Details

---

Target: PPAP2A

Alternative Name: PAP2a / PPAP2A ([PPAP2A Products](#))

Background: Name/Gene ID: PPAP2A

Synonyms: PPAP2A, PAP2, PAP2a, PAP2a2, LPP1, LLP1a, PAP-2a, PAP2-alpha, PAP2alpha2, PAPalpha1

Gene ID: 8611

NCBI Accession: [NP\\_795714](#)

UniProt: [O14494](#)

Pathways: [Intracellular Steroid Hormone Receptor Signaling Pathway](#)

## Application Details

---

Application Notes: Approved: WB (2.5 µg/mL)

Comment: Target Species of Antibody: Human

Restrictions: For Research Use only

## Handling

---

Format: Lyophilized

Reconstitution: After adding water, will consist of PBS buffer with 2 % sucrose

Concentration: Lot specific

Buffer: Lyophilized from PBS with 2 % sucrose

Handling Advice: Avoid repeated freezing and thawing.

Storage: 4 °C, -20 °C

Storage Comment: Long term: -20°C, the use of 50% glycerol is recommended if storing aliquots in -20°C for long term use (up to 1 year)

Short term (less than 1 week): 4°C. Avoid freeze-thaw cycles.

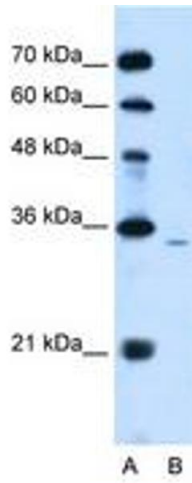


Image 1.