



[Go to Product page](#)

Datasheet for ABIN204992

anti-PSG1 antibody (AA 96-145)

2 Images

Overview

Quantity:	100 µL
Target:	PSG1
Binding Specificity:	AA 96-145
Reactivity:	Human
Host:	Rabbit
Clonality:	Polyclonal
Conjugate:	This PSG1 antibody is un-conjugated
Application:	Western Blotting (WB), Immunohistochemistry (IHC), Immunohistochemistry (Paraffin-embedded Sections) (IHC (p))

Product Details

Immunogen:	Synthetic peptide located between aa96-145 of human PSG1 (Q6ICR4, NP_008836). Percent identity by BLAST analysis: Human (100%). Type of Immunogen: Synthetic peptide
Isotype:	IgG
Specificity:	Human PSG1
Predicted Reactivity:	Percent identity by BLAST analysis: Human (100%).
Purification:	Protein A purified

Target Details

Target:	PSG1
Alternative Name:	PSG1 / CD66f (PSG1 Products)
Background:	Name/Gene ID: PSG1 Family: CEA Synonyms: PSG1, B1G1, CD66f, CD66f antigen, FL-NCA-1/2, PS-beta-G-1, PSBG1, PSG95, PSGGA, PSGIIA, PSBG-1, DHFRP2, PS-beta-C/D
Gene ID:	5669
NCBI Accession:	NP_008836
UniProt:	P11464

Application Details

Application Notes:	Approved: IHC, IHC-P, WB (2.5 µg/mL)
Comment:	Target Species of Antibody: Human
Restrictions:	For Research Use only

Handling

Format:	Lyophilized
Reconstitution:	After adding water, will consist of PBS buffer with 2 % sucrose
Concentration:	Lot specific
Buffer:	Lyophilized from PBS with 2 % sucrose
Storage:	4 °C, -20 °C
Storage Comment:	Long term: -20°C, the use of 50% glycerol is recommended if storing aliquots in -20°C for long term use (up to 1 year) Short term (less than 1 week): 4°C. Avoid freeze-thaw cycles.



Image 1.

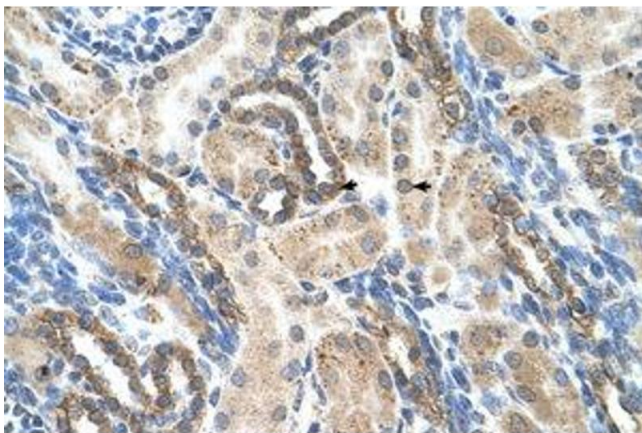


Image 2.