



Datasheet for ABIN204995  
**anti-ITGB1BP2 antibody (N-Term)**



[Go to Product page](#)

2 Images

Overview

Quantity:	100 µL
Target:	ITGB1BP2
Binding Specificity:	N-Term
Reactivity:	Human, Mouse, Rat, Rabbit, Bat, Monkey
Host:	Rabbit
Clonality:	Polyclonal
Conjugate:	This ITGB1BP2 antibody is un-conjugated
Application:	Western Blotting (WB), Immunohistochemistry (IHC), Immunohistochemistry (Paraffin-embedded Sections) (IHC (p))

Product Details

Immunogen:	Synthetic peptide from N-Terminus of human ITGB1BP2 (Q9UKP3, NP_036410). Percent identity by BLAST analysis: Human, Chimpanzee, Gorilla, Gibbon, Monkey, Marmoset, Mouse, Rat, Bat, Rabbit (100%), Galago, Elephant, Dog, Bovine, Horse, Pig (92%), Opossum, Guinea pig (85%).  Type of Immunogen: Synthetic peptide
Isotype:	IgG
Specificity:	Human ITGB1BP2
Predicted Reactivity:	Percent identity by BLAST analysis: Mouse, Rat, Rabbit (100%) Dog, Bovine, Horse (92%).
Purification:	Protein A purified

## Target Details

---

Target:	ITGB1BP2
Alternative Name:	ITGB1BP2 / MELUSIN ( <a href="#">ITGB1BP2 Products</a> )
Background:	Name/Gene ID: ITGB1BP2  Synonyms: ITGB1BP2, CHORDC3, ITGB1BP, MSTP015, MELUSIN
Gene ID:	26548
NCBI Accession:	<a href="#">NP_036410</a>
UniProt:	<a href="#">Q9UKP3</a>

## Application Details

---

Application Notes:	Approved: IHC, IHC-P, WB (2.5 µg/mL)
Comment:	Target Species of Antibody: Human
Restrictions:	For Research Use only

## Handling

---

Format:	Lyophilized
Reconstitution:	After adding water, will consist of PBS buffer with 2 % sucrose
Concentration:	Lot specific
Buffer:	Lyophilized from PBS with 2 % sucrose
Storage:	4 °C,-20 °C
Storage Comment:	Long term: -20°C, the use of 50% glycerol is recommended if storing aliquots in -20°C for long term use (up to 1 year)  Short term (less than 1 week): 4°C. Avoid freeze-thaw cycles.

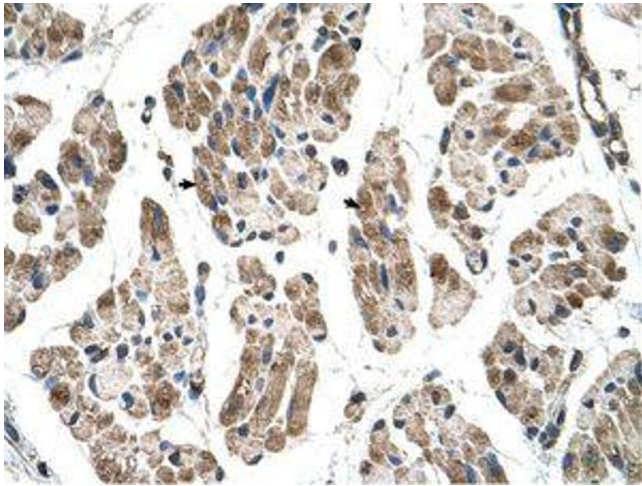


Image 1.



Image 2.