

Datasheet for ABIN205007
anti-SLC10A5 antibody (AA 351-400)



[Go to Product page](#)

2 Images

Overview

Quantity:	100 µL
Target:	SLC10A5
Binding Specificity:	AA 351-400
Reactivity:	Human, Horse
Host:	Rabbit
Clonality:	Polyclonal
Conjugate:	This SLC10A5 antibody is un-conjugated
Application:	Western Blotting (WB), Immunohistochemistry (IHC), Immunohistochemistry (Paraffin-embedded Sections) (IHC (p))

Product Details

Immunogen:	Synthetic peptide located between aa351-400 of human SLC10A5 (Q5PT55, NP_001010893). Percent identity by BLAST analysis: Human, Gorilla (100%), Gibbon, Marmoset (92%), Rat (90%), Horse, Platypus (85%). Type of Immunogen: Synthetic peptide
Isotype:	IgG
Specificity:	Human SLC10A5
Predicted Reactivity:	Percent identity by BLAST analysis: Rat (90%) Horse (85%).
Purification:	Protein A purified

Target Details

Target:	SLC10A5
Alternative Name:	SLC10A5 (SLC10A5 Products)
Background:	Name/Gene ID: SLC10A5 Subfamily: Bile acid:sodium symporter Family: Transporter Synonyms: SLC10A5, p5
Gene ID:	347051
NCBI Accession:	NP_001010893
UniProt:	Q5PT55

Application Details

Application Notes:	Approved: IHC, IHC-P, WB (1.25 µg/mL)
Comment:	Target Species of Antibody: Human
Restrictions:	For Research Use only

Handling

Format:	Lyophilized
Reconstitution:	After adding water, will consist of PBS buffer with 2 % sucrose
Concentration:	Lot specific
Buffer:	Lyophilized from PBS with 2 % sucrose
Storage:	4 °C, -20 °C
Storage Comment:	Long term: -20°C, the use of 50% glycerol is recommended if storing aliquots in -20°C for long term use (up to 1 year) Short term (less than 1 week): 4°C. Avoid freeze-thaw cycles.

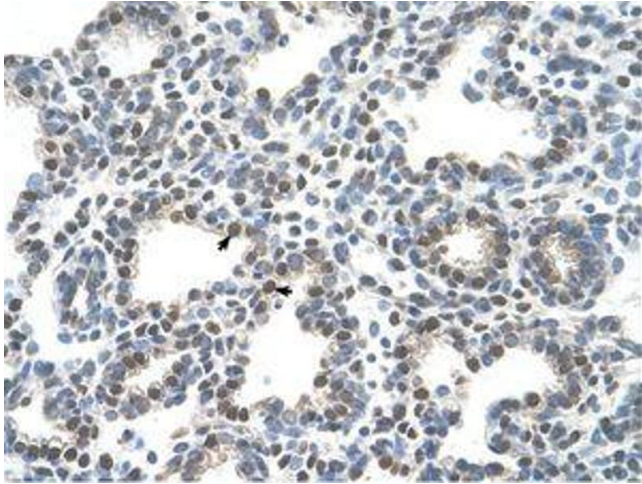


Image 1.



Image 2.