



Datasheet for ABIN205015
anti-MCT3 antibody (AA 251-300)



[Go to Product page](#)

2 Images

Overview

Quantity:	100 µL
Target:	MCT3
Binding Specificity:	AA 251-300
Reactivity:	Human, Mouse, Rat, Cow, Guinea Pig, Monkey, Pig
Host:	Rabbit
Clonality:	Polyclonal
Conjugate:	This MCT3 antibody is un-conjugated
Application:	Western Blotting (WB), Immunohistochemistry (IHC), Immunohistochemistry (Paraffin-embedded Sections) (IHC (p))

Product Details

Immunogen:	Synthetic peptide located between aa251-300 of human SLC16A8 (O95907, NP_037488). Percent identity by BLAST analysis: Human, Chimpanzee, Gibbon, Monkey, Galago, Marmoset, Guinea pig (100%), Elephant, Panda, Dog, Bat (92%), Mouse, Rat, Hamster, Bovine, Rabbit, Horse, Pig, Opossum, Turkey, Chicken, Platypus, Drosophila (85%). Type of Immunogen: Synthetic peptide
Isotype:	IgG
Specificity:	Human SLC16A8
Predicted Reactivity:	Percent identity by BLAST analysis: Guinea pig (100%) Dog (92%) Mouse, Rat, Bovine, Pig, Chicken (85%).

Product Details

Purification: Protein A purified

Target Details

Target: MCT3

Alternative Name: SLC16A8 ([MCT3 Products](#))

Background: Name/Gene ID: SLC16A8
Subfamily: Monocarboxylic acid transporter
Family: Transporter

Synonyms: SLC16A8, MCT 3, MCT3, REMP, Monocarboxylate transporter 3

Gene ID: 23539

NCBI Accession: [NP_037488](#)

UniProt: [O95907](#)

Application Details

Application Notes: Approved: IHC, IHC-P, WB (2.5 µg/mL)

Comment: Target Species of Antibody: Human

Restrictions: For Research Use only

Handling

Format: Lyophilized

Reconstitution: After adding water, will consist of PBS buffer with 2 % sucrose

Concentration: Lot specific

Buffer: Lyophilized from PBS with 2 % sucrose

Storage: 4 °C, -20 °C

Storage Comment: Long term: -20°C, the use of 50% glycerol is recommended if storing aliquots in -20°C for long term use (up to 1 year)
Short term (less than 1 week): 4°C. Avoid freeze-thaw cycles.

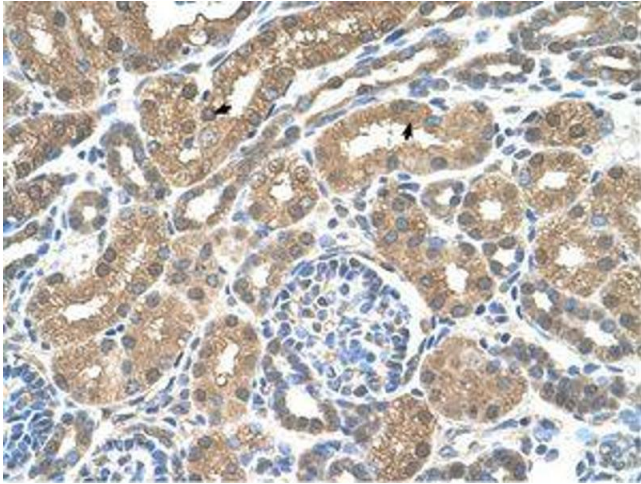


Image 1.



Image 2.