



[Go to Product page](#)

Datasheet for ABIN205017

## anti-SLC5A4 antibody (N-Term)

### 1 Image

#### Overview

Quantity:	100 µL
Target:	SLC5A4
Binding Specificity:	N-Term
Reactivity:	Human
Host:	Rabbit
Clonality:	Polyclonal
Conjugate:	This SLC5A4 antibody is un-conjugated
Application:	Western Blotting (WB)

#### Product Details

Immunogen:	Synthetic peptide from N-Terminus of human SLC5A4 (Q9NY91, NP_055042). Percent identity by BLAST analysis: Human (100%), Gorilla, Gibbon, Monkey (92%).  Type of Immunogen: Synthetic peptide
Isotype:	IgG
Specificity:	Human SLC5A4
Predicted Reactivity:	Percent identity by BLAST analysis: Human (100%) Monkey (84%).
Purification:	Protein A purified

#### Target Details

Target:	SLC5A4
---------	--------

## Target Details

---

Alternative Name:	SLC5A4 / SGLT2 ( <a href="#">SLC5A4 Products</a> )
Background:	Name/Gene ID: SLC5A4 Subfamily: Solute:sodium symporter Family: Transporter  Synonyms: SLC5A4, DJ90G24.4, Na(+)/glucose cotransporter 3, SAAT11, SGLT2, Sodium transporter, Sodium/glucose cotransporter 3, SAAT1, SGLT3
Gene ID:	6527
NCBI Accession:	<a href="#">NP_055042</a>
UniProt:	<a href="#">Q9NY91</a>
Pathways:	<a href="#">Proton Transport</a>

## Application Details

---

Application Notes:	Approved: WB (1.25 µg/mL)
Comment:	Target Species of Antibody: Human
Restrictions:	For Research Use only

## Handling

---

Format:	Lyophilized
Reconstitution:	After adding water, will consist of PBS buffer with 2 % sucrose
Concentration:	Lot specific
Buffer:	Lyophilized from PBS with 2 % sucrose
Storage:	4 °C,-20 °C
Storage Comment:	Long term: -20°C, the use of 50% glycerol is recommended if storing aliquots in -20°C for long term use (up to 1 year) Short term (less than 1 week): 4°C. Avoid freeze-thaw cycles.

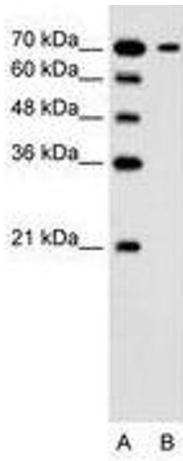


Image 1.