



[Go to Product page](#)

Datasheet for ABIN205026

anti-SLC06A1 antibody (AA 101-150)

1 Image

Overview

Quantity:	100 µL
Target:	SLC06A1
Binding Specificity:	AA 101-150
Reactivity:	Human
Host:	Rabbit
Clonality:	Polyclonal
Conjugate:	This SLC06A1 antibody is un-conjugated
Application:	Western Blotting (WB)

Product Details

Immunogen:	Synthetic peptide located between aa101-150 of human SLC06A1 (Q86UG4, NP_775759). Percent identity by BLAST analysis: Human, Chimpanzee, Gorilla (100%), Gibbon (85%), Monkey (83%). Type of Immunogen: Synthetic peptide
Isotype:	IgG
Specificity:	Human SLC06A1
Predicted Reactivity:	Percent identity by BLAST analysis: Human (100%).
Purification:	Protein A purified

Target Details

Target:	SLC06A1
Alternative Name:	SLC06A1 / OATP-I (SLC06A1 Products)
Background:	Name/Gene ID: SLC06A1 Synonyms: SLC06A1, Cancer/testis antigen 48, CT48, Gonad-specific transporter, GST, OATP-I, OATPY, OATP6A1, SLC21A19
Gene ID:	133482
NCBI Accession:	NP_775759
UniProt:	Q86UG4

Application Details

Application Notes:	Approved: WB (5 µg/mL)
Comment:	Target Species of Antibody: Human
Restrictions:	For Research Use only

Handling

Format:	Lyophilized
Reconstitution:	After adding water, will consist of PBS buffer with 2 % sucrose
Concentration:	Lot specific
Buffer:	Lyophilized from PBS with 2 % sucrose
Storage:	4 °C, -20 °C
Storage Comment:	Long term: -20°C, the use of 50% glycerol is recommended if storing aliquots in -20°C for long term use (up to 1 year) Short term (less than 1 week): 4°C. Avoid freeze-thaw cycles.

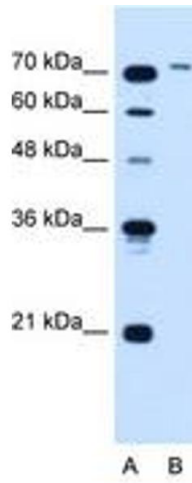


Image 1.