



[Go to Product page](#)

Datasheet for ABIN205028

anti-SLC36A3 antibody (N-Term)

2 Images

Overview

Quantity:	100 µL
Target:	SLC36A3
Binding Specificity:	N-Term
Reactivity:	Human, Pig, Monkey
Host:	Rabbit
Clonality:	Polyclonal
Conjugate:	This SLC36A3 antibody is un-conjugated
Application:	Immunohistochemistry (IHC), Western Blotting (WB), Immunohistochemistry (Paraffin-embedded Sections) (IHC (p))

Product Details

Immunogen:	Synthetic peptide from N-Terminus of human SLC36A3 (Q7Z6B4, NP_861439). Percent identity by BLAST analysis: Human, Gorilla, Gibbon, Monkey, Marmoset (100%), Pig (80%). Type of Immunogen: Synthetic peptide
Isotype:	IgG
Specificity:	Human SLC36A3
Predicted Reactivity:	Percent identity by BLAST analysis: Pig (80%).
Purification:	Protein A purified

Target Details

Target:	SLC36A3
Alternative Name:	SLC36A3 (SLC36A3 Products)
Background:	Name/Gene ID: SLC36A3 Synonyms: SLC36A3, TRAMD2, Tramdorin-2, PAT3, Tramdorin 2, Tramdorin2
Gene ID:	285641
NCBI Accession:	NP_861439
UniProt:	Q495N2

Application Details

Application Notes:	Approved: IHC, IHC-P, WB (5 µg/mL)
Comment:	Target Species of Antibody: Human
Restrictions:	For Research Use only

Handling

Format:	Lyophilized
Reconstitution:	After adding water, will consist of PBS buffer with 2 % sucrose
Concentration:	Lot specific
Buffer:	Lyophilized from PBS with 2 % sucrose
Storage:	4 °C,-20 °C
Storage Comment:	Long term: -20°C, the use of 50% glycerol is recommended if storing aliquots in -20°C for long term use (up to 1 year) Short term (less than 1 week): 4°C. Avoid freeze-thaw cycles.

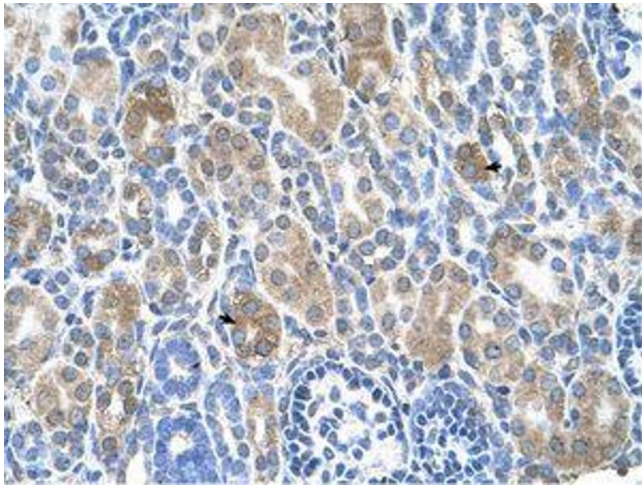


Image 1.

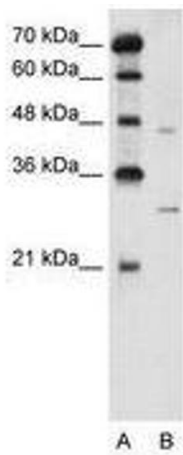


Image 2.