



[Go to Product page](#)

Datasheet for ABIN205029

anti-SLC46A3 antibody (N-Term)

2 Images

Overview

Quantity:	100 µL
Target:	SLC46A3
Binding Specificity:	N-Term
Reactivity:	Human, Dog, Mouse, Rabbit, Monkey
Host:	Rabbit
Clonality:	Polyclonal
Conjugate:	This SLC46A3 antibody is un-conjugated
Application:	Western Blotting (WB), Immunohistochemistry (IHC), Immunohistochemistry (Paraffin-embedded Sections) (IHC (p))

Product Details

Immunogen:	Synthetic peptide from N-Terminus of human SLC46A3 (Q7Z3Q1, NP_861450). Percent identity by BLAST analysis: Human, Chimpanzee, Orangutan, Gibbon, Monkey, Marmoset (100%), Galago (85%), Mouse (84%), Rat (78%). Type of Immunogen: Synthetic peptide
Isotype:	IgG
Specificity:	Human SLC46A3
Predicted Reactivity:	Percent identity by BLAST analysis: Mouse (84%).
Purification:	Protein A purified

Target Details

Target: SLC46A3

Alternative Name: SLC46A3 ([SLC46A3 Products](#))

Background: Name/Gene ID: SLC46A3

Synonyms: SLC46A3, FKSG16, RP11-97E23.2

Gene ID: 283537

NCBI Accession: [NP_861450](#)

UniProt: [Q7Z3Q1](#)

Application Details

Application Notes: Approved: IHC, IHC-P, WB (2.5 µg/mL)

Comment: Target Species of Antibody: Human

Restrictions: For Research Use only

Handling

Format: Lyophilized

Reconstitution: After adding water, will consist of PBS buffer with 2 % sucrose

Concentration: Lot specific

Buffer: Lyophilized from PBS with 2 % sucrose

Storage: 4 °C, -20 °C

Storage Comment: Long term: -20°C, the use of 50% glycerol is recommended if storing aliquots in -20°C for long term use (up to 1 year)
Short term (less than 1 week): 4°C. Avoid freeze-thaw cycles.

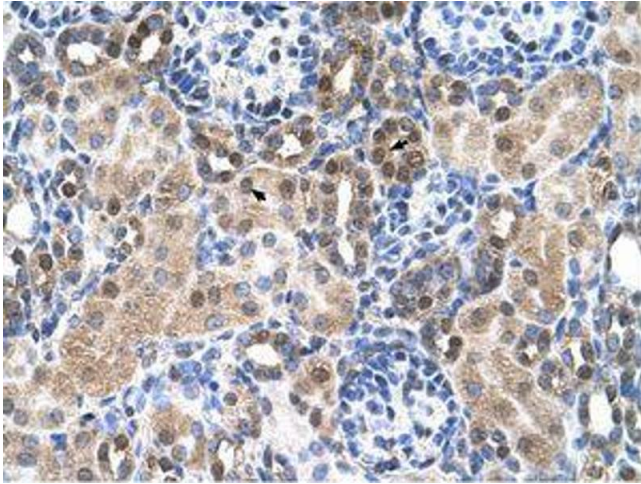


Image 1.

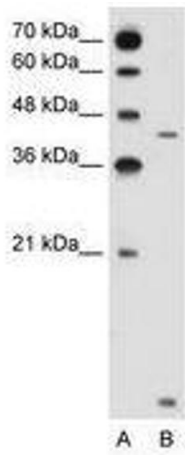


Image 2.