



[Go to Product page](#)

Datasheet for ABIN205031

## anti-SLC19A1 antibody (N-Term)

### 2 Images

#### Overview

Quantity:	100 µL
Target:	SLC19A1
Binding Specificity:	N-Term
Reactivity:	Human
Host:	Rabbit
Clonality:	Polyclonal
Conjugate:	This SLC19A1 antibody is un-conjugated
Application:	Western Blotting (WB), Immunohistochemistry (IHC), Immunohistochemistry (Paraffin-embedded Sections) (IHC (p))

#### Product Details

Immunogen:	Synthetic peptide from N-Terminus of human SLC19A1 (P41440, NP_919231). Percent identity by BLAST analysis: Human, Gorilla, Monkey (100%), Marmoset (92%), Panda (84%).  Type of Immunogen: Synthetic peptide
Isotype:	IgG
Specificity:	Human SLC19A1
Predicted Reactivity:	Percent identity by BLAST analysis: Human (100%).
Purification:	Protein A purified

## Target Details

---

Target:	SLC19A1
Alternative Name:	SLC19A1 ( <a href="#">SLC19A1 Products</a> )
Background:	Name/Gene ID: SLC19A1 Subfamily: Reduced folate carrier Family: Transporter  Synonyms: SLC19A1, CHMD, IFC1, Folate transporter 1, FOLT, IFC-1, Intestinal folate carrier 1, Reduced folate transporter, REFC, Folate transporter, Intestinal folate carrier, Placental folate transporter, Reduced folate carrier 1, Reduced folate carrier protein, RFC
Gene ID:	6573
NCBI Accession:	<a href="#">NP_919231</a>
UniProt:	<a href="#">P41440</a>
Pathways:	<a href="#">Dicarboxylic Acid Transport</a>

## Application Details

---

Application Notes:	Approved: IHC, IHC-P, WB (5 µg/mL)
Comment:	Target Species of Antibody: Human
Restrictions:	For Research Use only

## Handling

---

Format:	Lyophilized
Reconstitution:	After adding water, will consist of PBS buffer with 2 % sucrose
Concentration:	Lot specific
Buffer:	Lyophilized from PBS with 2 % sucrose
Handling Advice:	Avoid repeat freeze-thaw cycles.
Storage:	4 °C,-20 °C
Storage Comment:	Long term: -20°C, the use of 50% glycerol is recommended if storing aliquots in -20°C for long term use (up to 1 year) Short term (less than 1 week): 4°C. Avoid freeze-thaw cycles.

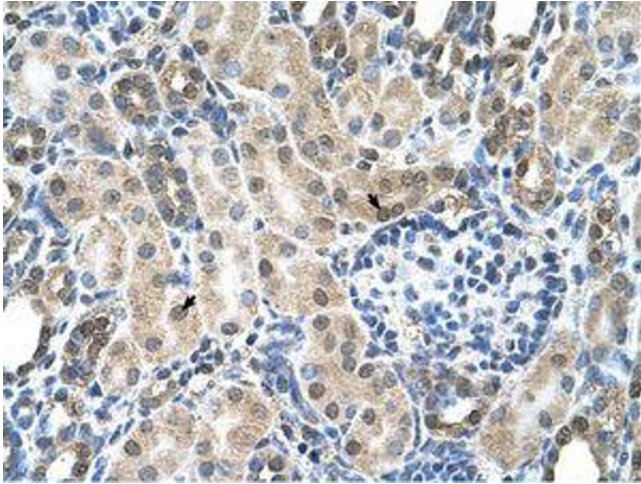


Image 1.

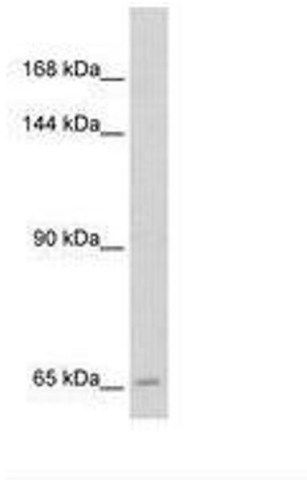


Image 2.