

Datasheet for ABIN205033

anti-Butyrylcholinesterase antibody (AA 151-200)



[Go to Product page](#)

2 Images

Overview

Quantity:	100 µL
Target:	Butyrylcholinesterase (BCHE)
Binding Specificity:	AA 151-200
Reactivity:	Human, Mouse, Dog, Cow, Horse, Sheep, Bat, Chicken
Host:	Rabbit
Clonality:	Polyclonal
Conjugate:	This Butyrylcholinesterase antibody is un-conjugated
Application:	Western Blotting (WB), Immunohistochemistry (IHC), Immunohistochemistry (Paraffin-embedded Sections) (IHC (p))

Product Details

Immunogen:	Synthetic peptide located between aa151-200 of human BCHE (P06276, NP_000046). Percent identity by BLAST analysis: Human, Chimpanzee, Gorilla, Orangutan, Gibbon, Monkey, Mouse, Shrew, Sheep, Elephant, Dog, Cat, Bovine, Bat, Horse, Opossum, Turkey, Chicken, Platypus, Lizard (100%), Galago, Marmoset, Rat, Rabbit, Pig, Guinea pig (92%), Panda (85%). Type of Immunogen: Synthetic peptide
Isotype:	IgG
Specificity:	Human BCHE
Predicted Reactivity:	Percent identity by BLAST analysis: Human, Mouse, Dog, Horse, Chicken (100%) Rat, Pig (92%).
Purification:	Protein A purified

Target Details

Target:	Butyrylcholinesterase (BCHE)
Alternative Name:	BCHE / Cholinesterase (BCHE Products)
Background:	Name/Gene ID: BCHE Synonyms: BCHE, Acylcholine acylhydrolase, Butyrylcholine esterase, Choline esterase II, CHE1, Cholinesterase, Pseudocholinesterase, Butyrylcholinesterase, Cholinesterase 1
Gene ID:	590
NCBI Accession:	NP_000046
UniProt:	P06276
Pathways:	Peptide Hormone Metabolism

Application Details

Application Notes:	Approved: IHC, IHC-P, WB (1.25 µg/mL)
Comment:	Target Species of Antibody: Human
Restrictions:	For Research Use only

Handling

Format:	Lyophilized
Reconstitution:	After adding water, will consist of PBS buffer with 2 % sucrose
Concentration:	Lot specific
Buffer:	Lyophilized from PBS with 2 % sucrose
Handling Advice:	Avoid repeated freezing and thawing.
Storage:	4 °C,-20 °C
Storage Comment:	Long term: -20°C, the use of 50% glycerol is recommended if storing aliquots in -20°C for long term use (up to 1 year) Short term (less than 1 week): 4°C. Avoid freeze-thaw cycles.

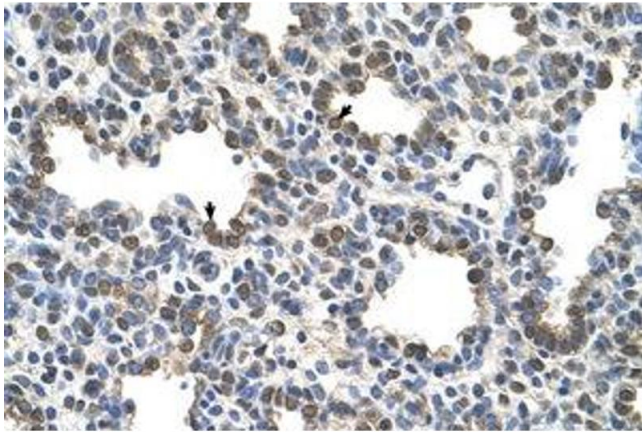


Image 1.

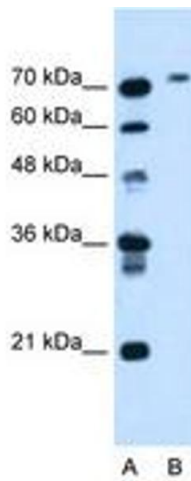


Image 2.