

Datasheet for ABIN205042

anti-Tyrosinase-Related Protein 1 antibody (AA 151-200)[Go to Product page](#)**1** Image

Overview

Quantity:	100 µL
Target:	Tyrosinase-Related Protein 1 (TYRP1)
Binding Specificity:	AA 151-200
Reactivity:	Human, Mouse, Dog, Goat, Horse, Rabbit, Sheep, Cow, Pig, Monkey, Chicken, Bat
Host:	Rabbit
Clonality:	Polyclonal
Conjugate:	This Tyrosinase-Related Protein 1 antibody is un-conjugated
Application:	Western Blotting (WB)

Product Details

Immunogen:	Synthetic peptide located between aa151-200 of human TYRP1 (P17643, NP_000541). Percent identity by BLAST analysis: Human, Chimpanzee, Gorilla, Gibbon, Monkey, Galago, Marmoset, Mouse, Sheep, Goat, Elephant, Dog, Cat, Bovine, Bat, Rabbit, Pig, Turkey, Zebra finch, Chicken, Platypus (100%), Rat, Panda, Opossum, Guinea pig, Lizard (92%), Horse (85%), Pufferfish (83%). Type of Immunogen: Synthetic peptide
Isotype:	IgG
Specificity:	Human TYRP1
Predicted Reactivity:	Percent identity by BLAST analysis: Human, Mouse, Sheep, Dog, Bovine, Goat, Rabbit, Pig, Chicken (100%) Rat, Guinea pig (92%) Horse (85%).
Purification:	Protein A purified

Target Details

Target:	Tyrosinase-Related Protein 1 (TYRP1)
Alternative Name:	TYRP1 / gp75 (TYRP1 Products)
Background:	Name/Gene ID: TYRP1 Synonyms: TYRP1, B-PROTEIN, CAS2, CATB, Glycoprotein 75, Hstyrp, gp75, OCA3, SHEP11, TRP-1, Tyrosinase-related protein 1, TYRP, TYRRP, Catalase B, DHICA oxidase, Melanoma antigen gp75
Gene ID:	7306
NCBI Accession:	NP_000541
UniProt:	P17643

Application Details

Application Notes:	Approved: WB (2.5 µg/mL)
Comment:	Target Species of Antibody: Human
Restrictions:	For Research Use only

Handling

Format:	Lyophilized
Reconstitution:	After adding water, will consist of PBS buffer with 2 % sucrose
Concentration:	Lot specific
Buffer:	Lyophilized from PBS with 2 % sucrose
Storage:	4 °C, -20 °C
Storage Comment:	Long term: -20°C, the use of 50% glycerol is recommended if storing aliquots in -20°C for long term use (up to 1 year) Short term (less than 1 week): 4°C. Avoid freeze-thaw cycles.

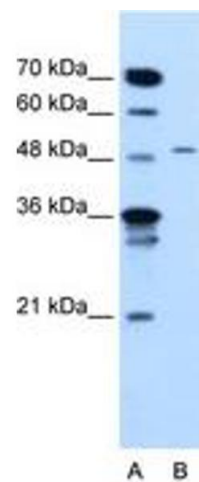


Image 1.