



[Go to Product page](#)

Datasheet for ABIN205053

anti-ARMCX6 antibody (AA 64-113)

2 Images

Overview

Quantity:	100 µL
Target:	ARMCX6
Binding Specificity:	AA 64-113
Reactivity:	Human, Mouse, Dog, Monkey
Host:	Rabbit
Clonality:	Polyclonal
Conjugate:	This ARMCX6 antibody is un-conjugated
Application:	Western Blotting (WB), Immunohistochemistry (IHC), Immunohistochemistry (Paraffin-embedded Sections) (IHC (p))

Product Details

Immunogen:	Synthetic peptide located between aa64-113 of human ARMCX6 (Q7L4S7, NP_061880). Percent identity by BLAST analysis: Human, Chimpanzee, Gorilla, Monkey, Marmoset, Mouse (100%), Rat, Pig, Guinea pig (92%), Elephant, Panda, Horse (85%). Type of Immunogen: Synthetic peptide
Isotype:	IgG
Specificity:	Human ARMCX6
Predicted Reactivity:	Percent identity by BLAST analysis: Human, Mouse (100%) Rat (92%).
Purification:	Protein A purified

Target Details

Target:	ARMCX6
Alternative Name:	ARMCX6 (ARMCX6 Products)
Background:	Name/Gene ID: ARMCX6 Synonyms: ARMCX6, Protein ARMCX6
Gene ID:	54470
NCBI Accession:	NP_061880

Application Details

Application Notes:	Approved: IHC, IHC-P, WB (5 µg/mL)
Comment:	Target Species of Antibody: Human
Restrictions:	For Research Use only

Handling

Format:	Lyophilized
Reconstitution:	After adding water, will consist of PBS buffer with 2 % sucrose
Concentration:	Lot specific
Buffer:	Lyophilized from PBS with 2 % sucrose
Storage:	4 °C, -20 °C
Storage Comment:	Long term: -20°C, the use of 50% glycerol is recommended if storing aliquots in -20°C for long term use (up to 1 year) Short term (less than 1 week): 4°C. Avoid freeze-thaw cycles.

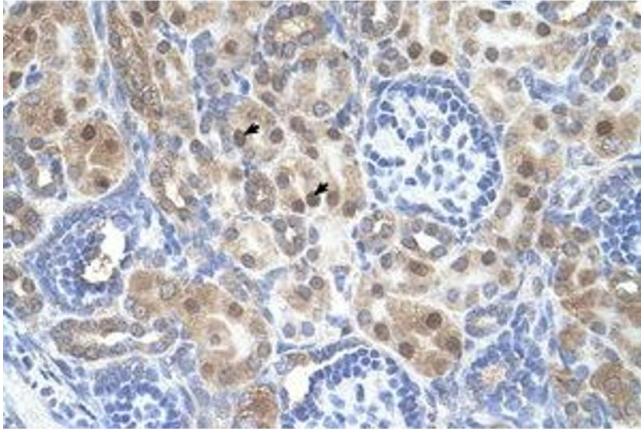


Image 1.

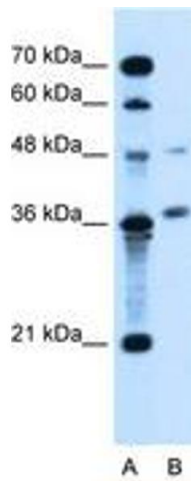


Image 2.