



[Go to Product page](#)

Datasheet for ABIN205059

anti-MGAT2 antibody (AA 201-250)

2 Images

Overview

Quantity:	100 µL
Target:	MGAT2
Binding Specificity:	AA 201-250
Reactivity:	Human, Mouse, Rat, Cow, Horse, Rabbit, Zebrafish (Danio rerio), Guinea Pig, Pig, Bat, Hamster, Monkey, Xenopus laevis
Host:	Rabbit
Clonality:	Polyclonal
Conjugate:	This MGAT2 antibody is un-conjugated
Application:	Immunohistochemistry (IHC), Western Blotting (WB), Immunohistochemistry (Paraffin-embedded Sections) (IHC (p))

Product Details

Immunogen:	Synthetic peptide located between aa201-250 of human MGAT2 (Q10469, NP_002399). Percent identity by BLAST analysis: Human, Chimpanzee, Gibbon, Galago, Marmoset, Mouse, Rat, Hamster, Elephant, Panda, Bovine, Bat, Rabbit, Horse, Pig, Opossum, Guinea pig, Platypus, Xenopus, Salmon, Stickleback, Zebrafish (100%). Type of Immunogen: Synthetic peptide
Isotype:	IgG
Specificity:	Human MGAT2
Predicted Reactivity:	Percent identity by BLAST analysis: Human, Mouse, Rat, Bovine, Rabbit, Horse, Pig, Xenopus,

Product Details

Zebrafish (100%).

Purification: Protein A purified

Target Details

Target: MGAT2

Alternative Name: MGAT2 ([MGAT2 Products](#))

Background: Name/Gene ID: MGAT2

Synonyms: MGAT2, CDG2A, GLCNACTII, GlcNAc-T II, GNT-II, GNT2, CDGS2

Gene ID: 4247

NCBI Accession: [NP_002399](#)

UniProt: [Q10469](#)

Application Details

Application Notes: Approved: IHC, IHC-P, WB (1.25 µg/mL)

Comment: Target Species of Antibody: Human

Restrictions: For Research Use only

Handling

Format: Lyophilized

Reconstitution: After adding water, will consist of PBS buffer with 2 % sucrose

Concentration: Lot specific

Buffer: Lyophilized from PBS with 2 % sucrose

Storage: 4 °C,-20 °C

Storage Comment: Long term: -20°C, the use of 50% glycerol is recommended if storing aliquots in -20°C for long term use (up to 1 year)

Short term (less than 1 week): 4°C. Avoid freeze-thaw cycles.

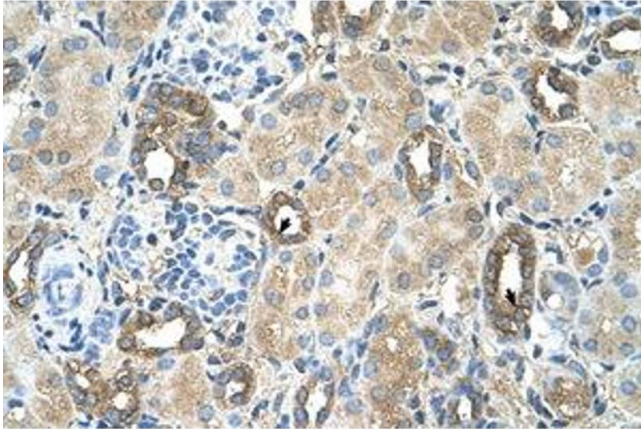


Image 1.

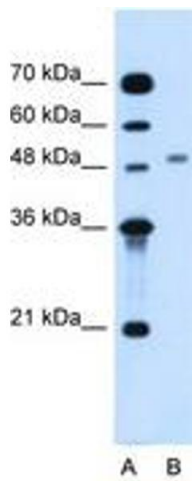


Image 2.