

Datasheet for ABIN205068  
**anti-CCDC112 antibody (AA 71-120)**



[Go to Product page](#)

2 Images

## Overview

Quantity:	100 µL
Target:	CCDC112
Binding Specificity:	AA 71-120
Reactivity:	Human, Mouse, Rat, Bat, Cow, Dog, Monkey
Host:	Rabbit
Clonality:	Polyclonal
Conjugate:	This CCDC112 antibody is un-conjugated
Application:	Western Blotting (WB), Immunohistochemistry (IHC), Immunohistochemistry (Paraffin-embedded Sections) (IHC (p))

## Product Details

Immunogen:	Synthetic peptide located between aa71-120 of human CCDC112 (Q6A334, NP_001035530). Percent identity by BLAST analysis: Human, Chimpanzee, Gorilla, Gibbon, Monkey, Marmoset, Dog, Bovine, Bat (100%), Galago, Elephant, Rabbit, Horse (92%), Mouse (85%), Rat (78%).  Type of Immunogen: Synthetic peptide
Isotype:	IgG
Specificity:	Human CCDC112
Predicted Reactivity:	Percent identity by BLAST analysis: Human, Monkey (100%) Mouse (85%).
Purification:	Protein A purified

## Target Details

---

Target:	CCDC112
Alternative Name:	CCDC112 / MBC1 ( <a href="#">CCDC112 Products</a> )
Background:	Name/Gene ID: CCDC112  Synonyms: CCDC112, Mutated in bladder cancer 1, MBC1
Gene ID:	153733
NCBI Accession:	<a href="#">NP_001035530</a>
UniProt:	<a href="#">Q8NEF3</a>

## Application Details

---

Application Notes:	Approved: IHC, IHC-P, WB (1.25 µg/mL)
Comment:	Target Species of Antibody: Human
Restrictions:	For Research Use only

## Handling

---

Format:	Lyophilized
Reconstitution:	After adding water, will consist of PBS buffer with 2 % sucrose
Concentration:	Lot specific
Buffer:	Lyophilized from PBS with 2 % sucrose
Storage:	4 °C,-20 °C
Storage Comment:	Long term: -20°C, the use of 50% glycerol is recommended if storing aliquots in -20°C for long term use (up to 1 year)  Short term (less than 1 week): 4°C. Avoid freeze-thaw cycles.

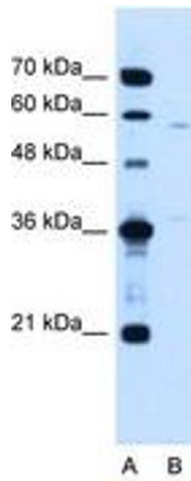


Image 1.

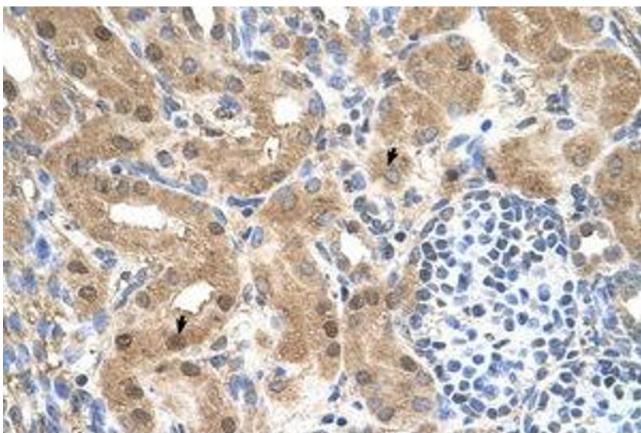


Image 2.