



Datasheet for ABIN205071  
**anti-FAM55D antibody (AA 407-456)**



[Go to Product page](#)

2 Images

Overview

Quantity:	100 µL
Target:	FAM55D
Binding Specificity:	AA 407-456
Reactivity:	Human, Dog, Rat, Mouse, Cow, Horse, Rabbit, Monkey
Host:	Rabbit
Clonality:	Polyclonal
Conjugate:	This FAM55D antibody is un-conjugated
Application:	Western Blotting (WB), Immunohistochemistry (IHC), Immunohistochemistry (Paraffin-embedded Sections) (IHC (p))

Product Details

Immunogen:	Synthetic peptide located between aa407-456 of human NXPE4 (Q6UWF7, NP_001071107). Percent identity by BLAST analysis: Human, Chimpanzee, Gorilla, Gibbon, Monkey, Mouse, Rat, Elephant, Dog, Bovine, Rabbit, Horse (100%), Galago, Pig, Guinea pig (92%), Opossum, Platypus, Xenopus (91%), Marmoset (85%).  Type of Immunogen: Synthetic peptide
Isotype:	IgG
Specificity:	Human FAM55D
Predicted Reactivity:	Percent identity by BLAST analysis: Mouse, Dog, Bovine, Rabbit, Horse (100%) Pig (92%).
Purification:	Protein A purified

## Target Details

---

Target:	FAM55D
Alternative Name:	NXPE4 / FAM55D ( <a href="#">FAM55D Products</a> )
Background:	Name/Gene ID: NXPE4  Synonyms: NXPE4, C11orf33, FAM55D, Protein FAM55D, NXPE family member 4
Gene ID:	54827
NCBI Accession:	<a href="#">NP_001071107</a>
UniProt:	<a href="#">Q6UWF7</a>

## Application Details

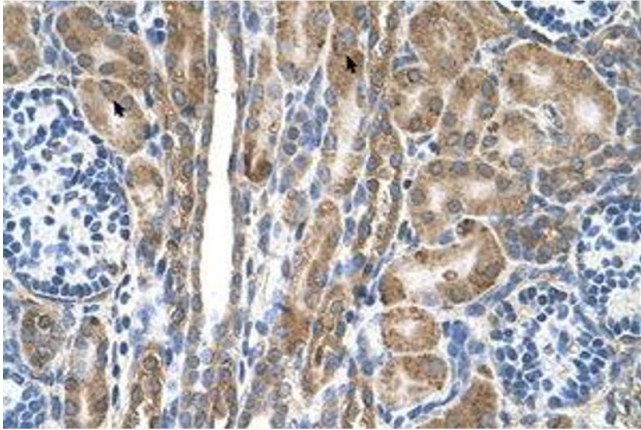
---

Application Notes:	Approved: IHC, IHC-P, WB (5 µg/mL)
Comment:	Target Species of Antibody: Human
Restrictions:	For Research Use only

## Handling

---

Format:	Lyophilized
Reconstitution:	After adding water, will consist of PBS buffer with 2 % sucrose
Concentration:	Lot specific
Buffer:	Lyophilized from PBS with 2 % sucrose
Storage:	4 °C,-20 °C
Storage Comment:	Long term: -20°C, the use of 50% glycerol is recommended if storing aliquots in -20°C for long term use (up to 1 year)  Short term (less than 1 week): 4°C. Avoid freeze-thaw cycles.



**Image 1.**



**Image 2.**