



Datasheet for ABIN205076
anti-LRPAP1 antibody (AA 258-307)



[Go to Product page](#)

2 Images

Overview

Quantity:	100 µL
Target:	LRPAP1
Binding Specificity:	AA 258-307
Reactivity:	Human, Mouse, Rat, Dog, Guinea Pig, Horse, Monkey, Pig
Host:	Rabbit
Clonality:	Polyclonal
Conjugate:	This LRPAP1 antibody is un-conjugated
Application:	Western Blotting (WB), Immunohistochemistry (IHC), Immunohistochemistry (Paraffin-embedded Sections) (IHC (p))

Product Details

Immunogen:	Synthetic peptide located between aa258-307 of human LRPAP1 (P30533, NP_002328). Percent identity by BLAST analysis: Human, Chimpanzee, Gorilla, Orangutan, Gibbon, Monkey, Galago, Marmoset, Mouse, Rat, Elephant, Panda, Dog, Horse, Pig, Guinea pig (100%), Bovine, Opossum, Turkey, Zebra finch, Chicken (92%), Bat, Xenopus (85%). Type of Immunogen: Synthetic peptide
Isotype:	IgG
Specificity:	Human LRPAP1
Predicted Reactivity:	Percent identity by BLAST analysis: Mouse, Dog, Horse, Pig, Guinea pig (100%) Bovine, Chicken (92%).

Product Details

Purification: Protein A purified

Target Details

Target: LRPAP1

Alternative Name: LRPAP1 ([LRPAP1 Products](#))

Background: Name/Gene ID: LRPAP1

Synonyms: LRPAP1, A2MRAP, Alpha-2-MRAP, A2RAP, HBP44, RAP

Gene ID: 4043

NCBI Accession: [NP_002328](#)

UniProt: [P30533](#)

Application Details

Application Notes: Approved: IHC, IHC-P, WB (2.5 µg/mL)

Comment: Target Species of Antibody: Human

Restrictions: For Research Use only

Handling

Format: Lyophilized

Reconstitution: After adding water, will consist of PBS buffer with 2 % sucrose

Concentration: Lot specific

Buffer: Lyophilized from PBS with 2 % sucrose

Storage: 4 °C, -20 °C

Storage Comment: Long term: -20°C, the use of 50% glycerol is recommended if storing aliquots in -20°C for long term use (up to 1 year)

Short term (less than 1 week): 4°C. Avoid freeze-thaw cycles.

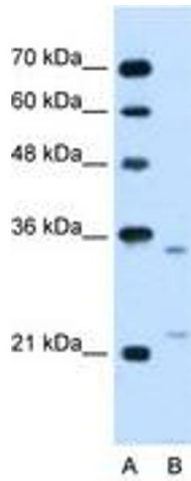


Image 1.

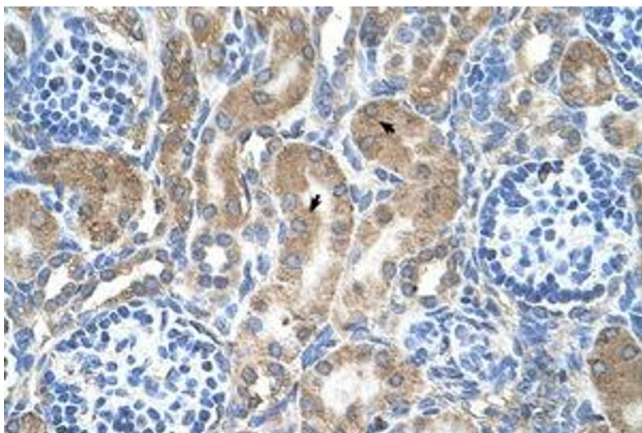


Image 2.