

Datasheet for ABIN205080
anti-SSR2 antibody (N-Term)



[Go to Product page](#)

2 Images

Overview

Quantity:	100 µL
Target:	SSR2
Binding Specificity:	N-Term
Reactivity:	Human, Mouse, Rat, Dog, Zebrafish (Danio rerio), Cow, Guinea Pig, Horse, Bat, Hamster, Monkey, Pig
Host:	Rabbit
Clonality:	Polyclonal
Conjugate:	This SSR2 antibody is un-conjugated
Application:	Western Blotting (WB), Immunohistochemistry (IHC), Immunohistochemistry (Paraffin-embedded Sections) (IHC (p))

Product Details

Immunogen:	Synthetic peptide from N-Terminus of human SSR2 (P43308, NP_003136). Percent identity by BLAST analysis: Human, Chimpanzee, Gorilla, Gibbon, Monkey, Galago, Marmoset, Mouse, Rat, Hamster, Elephant, Dog, Bovine, Bat, Horse, Pig, Guinea pig, Trout, Salmon, Stickleback, Pike, Zebrafish (100%), Opossum, Turkey, Zebra finch, Chicken, Xenopus, Frog (92%). Type of Immunogen: Synthetic peptide
Isotype:	IgG
Specificity:	Human SSR2
Predicted Reactivity:	Percent identity by BLAST analysis: Human, Rat, Bovine, Horse, Guinea pig, Zebrafish (100%)

Product Details

Chicken (92%) Xenopus (85%).

Purification: Protein A purified

Target Details

Target: SSR2

Alternative Name: SSR2 ([SSR2 Products](#))

Background: Name/Gene ID: SSR2

Synonyms: SSR2, SSR-beta, TRAP-BETA, HSD25, TLAP, TRAPB

Gene ID: 6746

NCBI Accession: [NP_003136](#)

UniProt: [P43308](#)

Application Details

Application Notes: Approved: IHC, IHC-P, WB (1.25 µg/mL)

Comment: Target Species of Antibody: Human

Restrictions: For Research Use only

Handling

Format: Lyophilized

Reconstitution: After adding water, will consist of PBS buffer with 2 % sucrose

Concentration: Lot specific

Buffer: Lyophilized from PBS with 2 % sucrose

Storage: 4 °C,-20 °C

Storage Comment: Long term: -20°C, the use of 50% glycerol is recommended if storing aliquots in -20°C for long term use (up to 1 year)

Short term (less than 1 week): 4°C. Avoid freeze-thaw cycles.

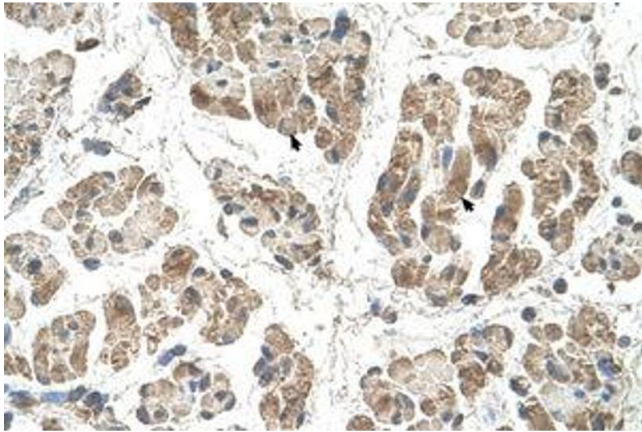


Image 1.



Image 2.