



[Go to Product page](#)

Datasheet for ABIN205087

## anti-SBDS antibody (AA 51-100)

### 2 Images

#### Overview

Quantity:	100 µL
Target:	SBDS
Binding Specificity:	AA 51-100
Reactivity:	Human, Mouse, Rat, Dog, Horse, Zebrafish (Danio rerio), Cow, Guinea Pig, Pig, Bat
Host:	Rabbit
Clonality:	Polyclonal
Conjugate:	This SBDS antibody is un-conjugated
Application:	Western Blotting (WB), Immunohistochemistry (IHC), Immunohistochemistry (Paraffin-embedded Sections) (IHC (p))

#### Product Details

Immunogen:	Synthetic peptide located between aa51-100 of human SBDS (Q9Y3A5, NP_057122). Percent identity by BLAST analysis: Human, Chimpanzee, Gorilla, Orangutan, Gibbon, Mouse, Rat, Elephant, Panda, Dog, Bovine, Bat, Horse, Pig, Opossum, Guinea pig, Platypus (100%), Marmoset, Rabbit (92%), Turkey, Chicken (85%), Zebrafish (84%).  Type of Immunogen: Synthetic peptide
Isotype:	IgG
Specificity:	Human SBDS
Predicted Reactivity:	Percent identity by BLAST analysis: Human, Mouse, Rat, Dog, Bovine, Pig (100%) Chicken (85%) Zebrafish (84%).

## Product Details

---

Purification: Protein A purified

## Target Details

---

Target: SBDS

Alternative Name: SBDS ([SBDS Products](#))

Background: Name/Gene ID: SBDS

Synonyms: SBDS, CGI-97, SWDS

Gene ID: 51119

NCBI Accession: [NP\\_057122](#)

UniProt: [Q9Y3A5](#)

Pathways: [Ribonucleoprotein Complex Subunit Organization](#), [Ribosome Assembly](#)

## Application Details

---

Application Notes: Approved: IHC, IHC-P, WB (2.5 µg/mL)

Comment: Target Species of Antibody: Human

Restrictions: For Research Use only

## Handling

---

Format: Lyophilized

Reconstitution: After adding water, will consist of PBS buffer with 2 % sucrose

Concentration: Lot specific

Buffer: Lyophilized from PBS with 2 % sucrose

Storage: 4 °C, -20 °C

Storage Comment: Long term: -20°C, the use of 50% glycerol is recommended if storing aliquots in -20°C for long term use (up to 1 year)

Short term (less than 1 week): 4°C. Avoid freeze-thaw cycles.

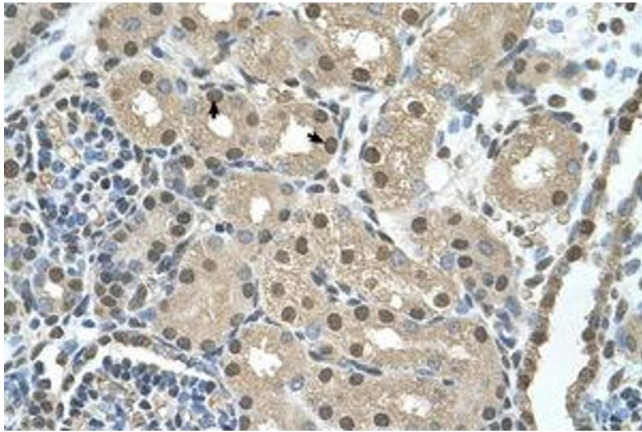


Image 1.

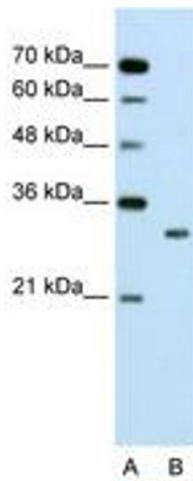


Image 2.