



[Go to Product page](#)

Datasheet for ABIN205088
anti-SBDS antibody (C-Term)

1 Image

Overview

Quantity:	100 µL
Target:	SBDS
Binding Specificity:	C-Term
Reactivity:	Human, Dog, Horse, Zebrafish (Danio rerio), Pig, Bat
Host:	Rabbit
Clonality:	Polyclonal
Conjugate:	This SBDS antibody is un-conjugated
Application:	Western Blotting (WB), Immunohistochemistry (IHC)

Product Details

Immunogen:	Synthetic peptide from C-Terminus of human SBDS (Q9Y3A5, NP_057122). Percent identity by BLAST analysis: Human, Chimpanzee, Gorilla, Orangutan, Gibbon, Panda, Dog, Bat, Horse, Pig, Pufferfish (100%), Marmoset, Mouse, Rat, Elephant, Bovine, Rabbit, Opossum, Guinea pig, Platypus, Xenopus (92%), Stickleback (90%), Turkey, Chicken, Zebrafish (85%), Sablefish (84%). Type of Immunogen: Synthetic peptide
Isotype:	IgG
Specificity:	Human SBDS
Predicted Reactivity:	Percent identity by BLAST analysis: Human, Dog, Pig (100%) Mouse, Rat, Bovine, Xenopus (92%) Chicken, Zebrafish (85%).
Purification:	Protein A purified

Target Details

Target:	SBDS
Alternative Name:	SBDS (SBDS Products)
Background:	Name/Gene ID: SBDS Synonyms: SBDS, CGI-97, SWDS
Gene ID:	51119
NCBI Accession:	NP_057122
UniProt:	Q9Y3A5
Pathways:	Ribonucleoprotein Complex Subunit Organization , Ribosome Assembly

Application Details

Application Notes:	Approved: IHC, WB (1.25 µg/mL)
Comment:	Target Species of Antibody: Human
Restrictions:	For Research Use only

Handling

Format:	Lyophilized
Reconstitution:	After adding water, will consist of PBS buffer with 2 % sucrose
Concentration:	Lot specific
Buffer:	Lyophilized from PBS with 2 % sucrose
Storage:	4 °C, -20 °C
Storage Comment:	Long term: -20°C, the use of 50% glycerol is recommended if storing aliquots in -20°C for long term use (up to 1 year) Short term (less than 1 week): 4°C. Avoid freeze-thaw cycles.

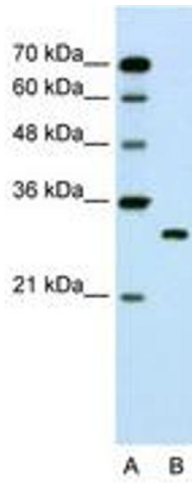


Image 1.