

Datasheet for ABIN205523
anti-CEBPB antibody



[Go to Product page](#)

1 Image

Overview

Quantity:	100 µg
Target:	CEBPB
Reactivity:	Mouse, Rat
Host:	Mouse
Clonality:	Monoclonal
Conjugate:	This CEBPB antibody is un-conjugated
Application:	Western Blotting (WB), Immunofluorescence (IF), Immunoprecipitation (IP)

Product Details

Immunogen:	Recombinant mouse CEBPB / CEBP Beta. Type of Immunogen: Recombinant protein
Clone:	1H7
Isotype:	IgG2a
Specificity:	This antibody recognizes all three isoforms C/EBP beta, LAP and LIP.
Purification:	Affinity purified

Target Details

Target:	CEBPB
Alternative Name:	C/EBP Beta / CEBPB (CEBPB Products)

Target Details

Background:	Name/Gene ID: CEBPB Synonyms: CEBPB, C/EBP-beta, C/EBP beta, CRP2, LAP, Liver activator protein, Nuclear factor NF-IL6, IL6DBP, TCF5, NFIL6, TCF-5, Transcription factor 5, NF-IL6
Gene ID:	1051
UniProt:	P17676
Pathways:	Interferon-gamma Pathway , Autophagy , Brown Fat Cell Differentiation

Application Details

Application Notes:	Optimal working dilution should be determined by the investigator.
Comment:	Target Species of Antibody: Mouse
Restrictions:	For Research Use only

Handling

Format:	Liquid
Concentration:	Lot specific
Buffer:	Phosphate-buffered solution, pH 7.2, 0.09 % sodium azide.
Preservative:	Sodium azide
Precaution of Use:	This product contains Sodium azide: a POISONOUS AND HAZARDOUS SUBSTANCE which should be handled by trained staff only.
Handling Advice:	Avoid repeated freezing and thawing.
Storage:	4 °C, -20 °C
Storage Comment:	4°C or -20°C, Avoid freeze-thaw cycles.

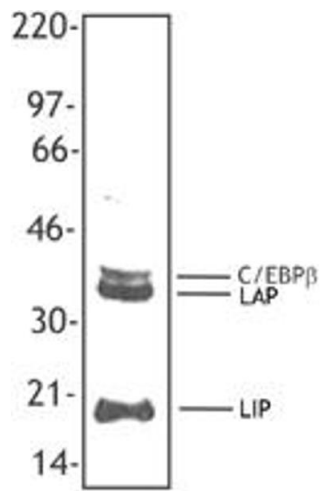


Image 1.