



Datasheet for ABIN205544
anti-TREM1 antibody



[Go to Product page](#)

2 Images

Overview

Quantity:	100 µg
Target:	TREM1
Reactivity:	Human
Host:	Mouse
Clonality:	Monoclonal
Conjugate:	This TREM1 antibody is un-conjugated
Application:	Western Blotting (WB), Flow Cytometry (FACS), ELISA

Product Details

Immunogen:	Recombinant human TREM1. Type of Immunogen: Recombinant protein
Clone:	TREM-37
Isotype:	IgG2b
Specificity:	Recombinant human TREM-1
Purification:	Affinity purified

Target Details

Target:	TREM1
Alternative Name:	TREM1 / TREM-1 (TREM1 Products)

Target Details

Background:	Name/Gene ID: TREM1 Synonyms: TREM1, CD354, CD354 antigen, Triggering-receptor TREM1, TREM-1
Gene ID:	54210
UniProt:	Q9NP99

Application Details

Application Notes:	Optimal working dilution should be determined by the investigator.
Comment:	Target Species of Antibody: Human
Restrictions:	For Research Use only

Handling

Format:	Liquid
Concentration:	Lot specific
Buffer:	Phosphate-buffered solution, pH 7.2, 0.09 % sodium azide.
Preservative:	Sodium azide
Precaution of Use:	This product contains Sodium azide: a POISONOUS AND HAZARDOUS SUBSTANCE which should be handled by trained staff only.
Handling Advice:	Avoid repeated freezing and thawing.
Storage:	4 °C,-20 °C
Storage Comment:	4°C or -20°C, Avoid freeze-thaw cycles.

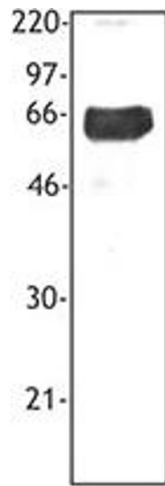


Image 1.

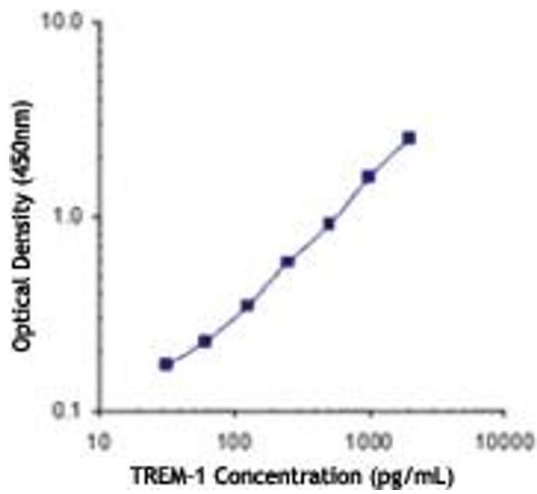


Image 2.