



[Go to Product page](#)

Datasheet for ABIN205594

anti-Retinoblastoma Protein (Rb) antibody

1 Image

Overview

| | |
|--------------|--|
| Quantity: | 100 µL |
| Target: | Retinoblastoma Protein (Rb) (Rb Protein) |
| Reactivity: | Human |
| Host: | Mouse |
| Clonality: | Monoclonal |
| Conjugate: | This Retinoblastoma Protein (Rb) antibody is un-conjugated |
| Application: | ELISA, Immunohistochemistry (IHC) |

Product Details

| | |
|---------------|---|
| Immunogen: | Purified recombinant fragment of human RB expressed in E. coli. Type of Immunogen: Recombinant protein |
| Clone: | 7E4B8 |
| Isotype: | IgG1 |
| Specificity: | Ni-NTA purified recombinant protein RB expressed in E. Coli strain M15 |
| Purification: | Protein G purified |

Target Details

| | |
|-------------------|---|
| Target: | Retinoblastoma Protein (Rb) (Rb Protein) |
| Alternative Name: | RB1 / Retinoblastoma / RB (Rb Protein Products) |

Target Details

| | |
|-------------|---|
| Background: | Name/Gene ID: RB1 Synonyms: RB1, p105-Rb, Osteosarcoma, PRb, Retinoblastoma, Retinoblastoma 1, OSRC, RB, Pp110 |
| Gene ID: | 5925 |
| UniProt: | P06400 |
| Pathways: | Mitotic G1-G1/S Phases |

Application Details

| | |
|--------------------|-----------------------------------|
| Application Notes: | Approved: ELISA (1:10000), IHC |
| Comment: | Target Species of Antibody: Human |
| Restrictions: | For Research Use only |

Handling

| | |
|--------------------|--|
| Format: | Liquid |
| Concentration: | Lot specific |
| Buffer: | Ascitic fluid containing 0.03 % sodium azide |
| Preservative: | Sodium azide |
| Precaution of Use: | This product contains Sodium azide: a POISONOUS AND HAZARDOUS SUBSTANCE which should be handled by trained staff only. |
| Handling Advice: | Avoid repeat freeze-thaw cycles. |
| Storage: | 4 °C, -20 °C |
| Storage Comment: | Short term: 4°C Long term: -20°C. |

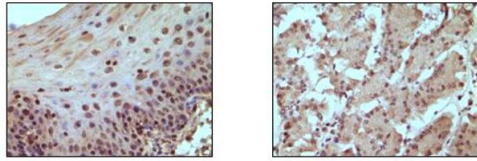


Figure 1: Immunohistochemical staining of paraffin-embedded human normal esophagus tissue (**Left**) showing nucleus localization, human normal stomach tissue(**Right**) showing nucleus localization using anti-human Rb Antibody. The second antibody- HRP was used before color development with DAB.

Image 1.