



[Go to Product page](#)

Datasheet for ABIN206080
anti-CD45RB antibody (FITC)

1 Image

Overview

Quantity:	0.1 mg
Target:	CD45RB
Reactivity:	Human, Monkey, Rhesus Monkey, Rabbit
Host:	Mouse
Clonality:	Monoclonal
Conjugate:	This CD45RB antibody is conjugated to FITC
Application:	Flow Cytometry (FACS), Immunohistochemistry (IHC), Immunohistochemistry (Paraffin-embedded Sections) (IHC (p)), Immunoprecipitation (IP), Immunohistochemistry (Frozen Sections) (IHC (fro))

Product Details

Immunogen:	Human lymphocytes Type of Immunogen: Cells
Clone:	MEM-55
Isotype:	IgG1
Specificity:	Recognises the isoform of the leucocyte common antigen encoded by exon B and stains B cells, most T cells and monocytes.
No Cross-Reactivity:	Llama, Goat
Purification:	Protein G purified

Target Details

Target: CD45RB

Alternative Name: CD45RB ([CD45RB Products](#))

Application Details

Application Notes: Approved: Flo, IHC, IHC-Fr, IHC-P, IP

Usage: The applications listed have been tested for the unconjugated form of this product. Other forms have not been tested. Flow Cytometry: Use 10 µL of the suggested working dilution to label 10⁶ cells in 100 µL. Method sheets are available on request.

Comment: Target Species of Antibody: Human

Restrictions: For Research Use only

Handling

Format: Liquid

Concentration: Lot specific

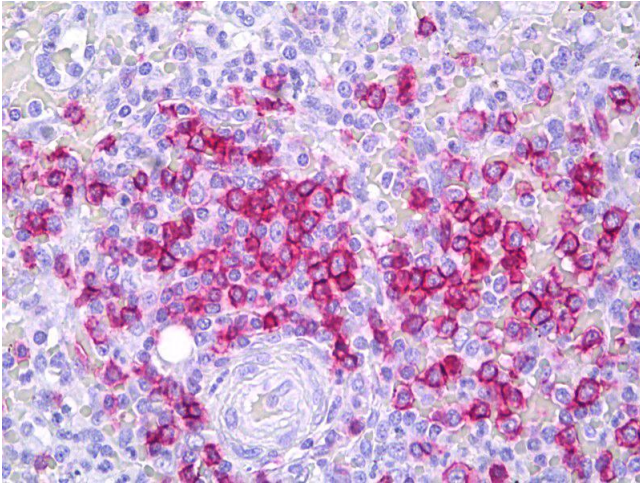
Buffer: PBS, pH 7.4, 0.09 % sodium azide, 1 % BSA.

Preservative: Sodium azide

Precaution of Use: This product contains Sodium azide: a POISONOUS AND HAZARDOUS SUBSTANCE which should be handled by trained staff only.

Storage: 4 °C, -20 °C

Storage Comment: Short term: 4°C
Long term: -20°C.



Immunohistochemistry

Image 1. Anti-CD45RB antibody IHC of human spleen, lymphocytes. Immunohistochemistry of formalin-fixed, paraffin-embedded tissue after heat-induced antigen retrieval. Antibody concentration 10 ug/ml. This image was taken for the unconjugated form of this pro ...