

Datasheet for ABIN206402
anti-CD6 antibody (FITC)



[Go to Product page](#)

1 Image

Overview

Quantity:	0.1 mg
Target:	CD6
Reactivity:	Human
Host:	Mouse
Clonality:	Monoclonal
Conjugate:	This CD6 antibody is conjugated to FITC
Application:	Western Blotting (WB), Flow Cytometry (FACS), Immunohistochemistry (IHC), Immunoprecipitation (IP), Immunohistochemistry (Paraffin-embedded Sections) (IHC (p))

Product Details

Immunogen:	Purified CD6 antigen. Type of Immunogen: Purified protein
Clone:	MEM-98
Isotype:	IgG1
Specificity:	Recognizes human CD6, also known as T12 or TP120. CD6 is a ~100-130 kD type 1 single pass trans-membrane protein member of the immunoglobulin superfamily. CD6 possesses 3 scavenger receptor cysteine rich domains in it's extracellular sequence. The membrane proximal SRCR3 contains the epitope responsible for interaction with CD166, also known as Activated Leukocyte Cell Adhesion Molecule or CD166. Multiple gene transcripts have been detected encoding CD6 in man resulting in the production of a number of CD6 isoforms. Recognizes an external epitope located in the membrane-distal SRCR domain 1 and is expected

Product Details

to recognize all CD6 isoforms so far identified,. CD6 has been implicated as a therapeutic target for a number of autoimmune conditions including Sjogren's syndrome, rheumatoid arthritis and psoriasis.

Purification: Protein G purified

Target Details

Target: CD6

Alternative Name: CD6 ([CD6 Products](#))

Background: Name/Gene ID: CD6

Synonyms: CD6, CD6 Molecule, T12, TP120, CD6 antigen

Gene ID: 923

Application Details

Application Notes: Approved: Flo (1:1), IHC, IHC-P, IP, WB

Usage: The applications listed have been tested for the unconjugated form of this product. Other forms have not been tested. Flow Cytometry: Use 10 µL of the suggested working dilution to label 10⁶ cells or 100 µL whole blood. Method sheets are available on request.

Comment: Target Species of Antibody: Human

Restrictions: For Research Use only

Handling

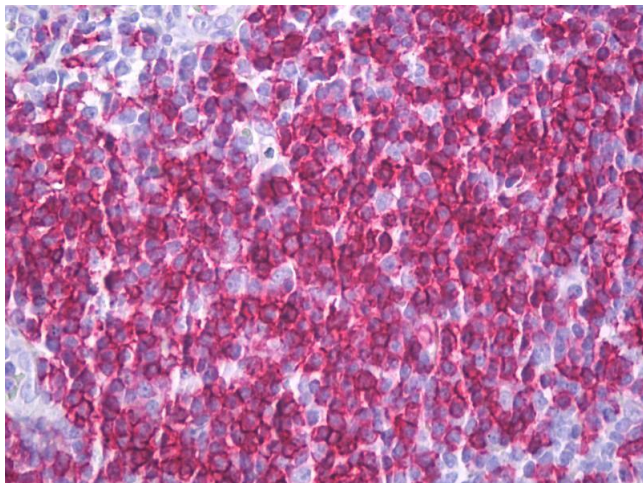
Format: Liquid

Concentration: Lot specific

Buffer: PBS, pH 7.4, 0.09 % sodium azide, 1 % BSA.

Preservative: Sodium azide

Precaution of Use: This product contains Sodium azide: a POISONOUS AND HAZARDOUS SUBSTANCE which should be handled by trained staff only.



Immunohistochemistry

Image 1. Anti-CD6 antibody IHC of human tonsil. Immunohistochemistry of formalin-fixed, paraffin-embedded tissue after heat-induced antigen retrieval. Antibody concentration 10 ug/ml. This image was taken for the unconjugated form of this product. Other form ...