



[Go to Product page](#)

Datasheet for ABIN207616  
**anti-GOLGA6A antibody**

1 Image

### Overview

Quantity:	0.1 mg
Target:	GOLGA6A
Reactivity:	Human
Host:	Mouse
Clonality:	Monoclonal
Conjugate:	This GOLGA6A antibody is un-conjugated
Application:	ELISA, Western Blotting (WB)

### Product Details

Immunogen:	Recombinant human GOLGA6A / GOLGA6. Type of Immunogen: Recombinant protein
Clone:	1B7B4
Isotype:	IgG1
Specificity:	Ni-NTA purified truncated recombinant GLP expressed in E. Coli strain BL21 (DE3)
Purification:	Affinity purified

### Target Details

Target:	GOLGA6A
Alternative Name:	GOLGA6A ( <a href="#">GOLGA6A Products</a> )

## Target Details

Background:	Name/Gene ID: GOLGA6A  Synonyms: GOLGA6A, GLP, Golgin linked to PML, Golgin subfamily A member 6A, Golgin-like protein, GOLGA6, Golgin A6 family, member A
Gene ID:	342096
UniProt:	<a href="#">Q9NYA3</a>

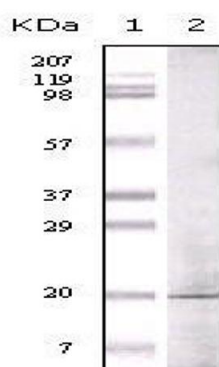
## Application Details

Application Notes:	Approved: ELISA (1:10000), WB (1:200 - 1:1000)
Comment:	Target Species of Antibody: Human
Restrictions:	For Research Use only

## Handling

Concentration:	Lot specific
Storage:	-20 °C
Storage Comment:	Short term: -20°C Long term: -20°C.

## Images



**Figure 1:** Western blot analysis using anti- human GLP monoclonal antibody against truncated GLP recombinant protein.

Image 1.