



[Go to Product page](#)

Datasheet for ABIN207672

## anti-Importin 9 antibody (AA 850-950)

### 1 Image

#### Overview

Quantity:	100 µg
Target:	Importin 9 (IPO9)
Binding Specificity:	AA 850-950
Reactivity:	Human, Mouse, Rat, Dog, Cow, Chicken, Monkey, Opossum
Host:	Rabbit
Clonality:	Polyclonal
Conjugate:	This Importin 9 antibody is un-conjugated
Application:	Western Blotting (WB)

#### Product Details

Immunogen:	A portion of amino acids 850-950 of human Importin-9. Type of Immunogen: Protein fragment
Isotype:	IgG
Specificity:	The amino acid sequence used as immunogen is 100 % homologous in human (isoforms CRA_a, _b, _c), mouse (isoforms 1 and 2), rat, dog and rhesus monkey, 88 % homologous in chicken, 83 % homologous in opossum, and 78 % in bovine.
Purification:	Protein G purified

#### Target Details

Target:	Importin 9 (IPO9)
---------	-------------------

## Target Details

---

Alternative Name:	IPO9 / Importin 9 ( <a href="#">IPO9 Products</a> )
Background:	Name/Gene ID: IPO9  Synonyms: IPO9, Importin-9, Importin 9, KIAA1192, Ran-binding protein 9, Imp9
Gene ID:	55705
UniProt:	<a href="#">Q96P70</a>
Pathways:	<a href="#">Protein targeting to Nucleus</a>

## Application Details

---

Application Notes:	Approved: WB (1 - 3 µg/mL)
Comment:	Target Species of Antibody: Human
Restrictions:	For Research Use only

## Handling

---

Format:	Liquid
Concentration:	Lot specific
Buffer:	PBS, 0.2 % gelatin, 0.05 % sodium azide.
Preservative:	Sodium azide
Precaution of Use:	This product contains Sodium azide: a POISONOUS AND HAZARDOUS SUBSTANCE which should be handled by trained staff only.
Handling Advice:	Avoid repeated freezing and thawing.
Storage:	4 °C, -20 °C
Storage Comment:	4°C or -20°C, Avoid freeze-thaw cycles.

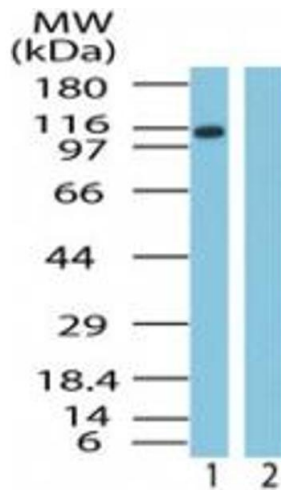


Image 1.