



Datasheet for ABIN207915

anti-Retinoblastoma Protein (Rb) antibody (Cleavage Site)



[Go to Product page](#)

2 Images

Overview

Quantity:	0.1 mg
Target:	Retinoblastoma Protein (Rb) (Rb Protein)
Binding Specificity:	Cleavage Site
Reactivity:	Human, Mouse
Host:	Mouse
Clonality:	Monoclonal
Conjugate:	This Retinoblastoma Protein (Rb) antibody is un-conjugated
Application:	Western Blotting (WB), Immunohistochemistry (IHC)

Product Details

Immunogen:	A synthetic peptide corresponding to a region of the caspase-3-induced cleavage site of human Rb. Type of Immunogen: Synthetic peptide
Clone:	172C1094
Isotype:	IgG1
Specificity:	Recognizes cleaved Rb (DRb-p70). Does not recognize full-length Rb. In camptothecin treated HL60, an ~68 kD band is observed. DRb-p70 exists in vivo as an N-terminally truncated form of Rb (Liu et al.). DRb-p70 is thought to be the product of alternative translation and is expressed in primary myeloid cells in fetal liver, bone marrow and spleen. DRb-p70 is also specifically expressed in tumor-associated macrophages (TAMs). TAMs are an important targets of cancer

Product Details

therapy. DRb-p70 is a marker of TAMs, and maybe useful for identifying tumors with macrophage infiltration (Liu et al, 2005).

Purification: Protein G purified

Target Details

Target: Retinoblastoma Protein (Rb) (Rb Protein)

Alternative Name: RB1 / Retinoblastoma / RB ([Rb Protein Products](#))

Background: Name/Gene ID: RB1

Synonyms: RB1, p105-Rb, Osteosarcoma, PRb, Retinoblastoma, Retinoblastoma 1, OSRC, RB, Pp110

Gene ID: 5925

UniProt: [P06400](#)

Pathways: [Mitotic G1-G1/S Phases](#)

Application Details

Application Notes: Approved: IHC, WB (2 µg/mL)

Not recommended for: IHC-P

Comment: Target Species of Antibody: Human

Restrictions: For Research Use only

Handling

Format: Liquid

Concentration: Lot specific

Buffer: PBS, 0.02 % sodium azide.

Preservative: Sodium azide

Precaution of Use: This product contains Sodium azide: a POISONOUS AND HAZARDOUS SUBSTANCE which should be handled by trained staff only.

Storage: 4 °C,-80 °C

Handling

Storage Comment: Short term: 4°C
Long term: -70°C.

Images

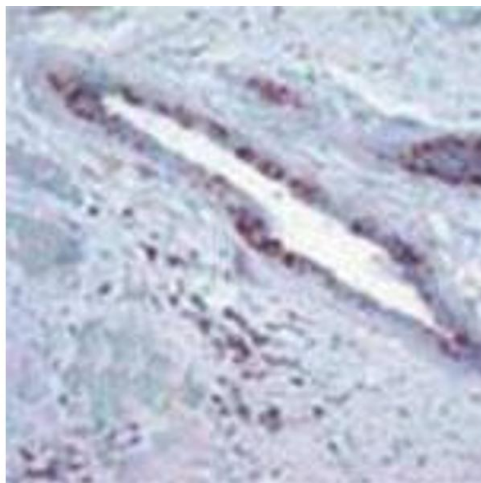
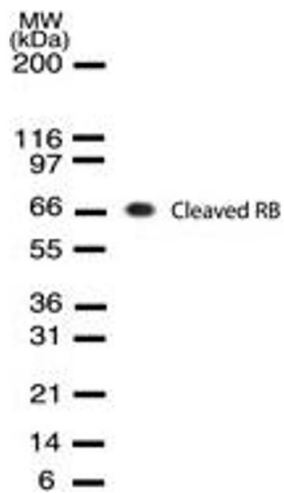


Image 1.

Image 2.