



[Go to Product page](#)

Datasheet for ABIN207918

anti-ROCK1 antibody (AA 1114-1126)

1 Image

Overview

Quantity:	0.1 mg
Target:	ROCK1
Binding Specificity:	AA 1114-1126
Reactivity:	Human, Mouse, Rat, Monkey, Cow, Bat, Dog, Horse
Host:	Mouse
Clonality:	Monoclonal
Conjugate:	This ROCK1 antibody is un-conjugated
Application:	Western Blotting (WB)

Product Details

Immunogen:	<p>This antibody was generated by immunizing mice with a synthetic peptide sequence corresponding to residues 1114-1126 GNLPESTRIEGWLS of human ROCK-1. Immunogen peptide sequence is adjacent to the caspase-3 cleavage site of ROCK-1. Percent identity by BLAST analysis: Human, Chimpanzee, Gorilla, Gibbon, Monkey, Marmoset, Mouse, Rat, Elephant, Bovine, Dog, Bat, Horse, Opossum, Platypus (100%), Rabbit (92%), Chicken (85%).</p> <p>Type of Immunogen: Synthetic peptide</p>
Clone:	154C1465
Isotype:	IgG
Specificity:	This mAb recognizes the cleaved C-terminus of ROCK-1. It does not recognize the full-length protein. Since ROCK-1 is cleaved by caspase-3 during apoptosis, this may be used for detection

Product Details

of apoptosis.

Predicted Reactivity: Percent identity by BLAST analysis: Human, Chimpanzee, Gorilla, Gibbon, Monkey, Marmoset, Mouse, Rat, Elephant, Bovine, Dog, Bat, Horse, Opossum, Platypus (100%) Rabbit (92%) Chicken (85%).

Purification: Protein G purified

Target Details

Target: ROCK1

Alternative Name: Rho Kinase / ROCK1 ([ROCK1 Products](#))

Background: Name/Gene ID: ROCK1
Subfamily: ROCK
Family: Protein Kinase

Synonyms: ROCK1, p160 Rho-associated kinase, p160ROCK, p160 ROCK-1, p160-ROCK, p160RhoK, Rho-associated kinase, Rock1, Rok, Rok alpha, Rho-alpha kinase, p160 rho-kinase, Rho kinase, ROCK-I, Rokalpha

Gene ID: 6093

UniProt: [Q13464](#)

Pathways: [Microtubule Dynamics](#), [WNT Signaling](#), [M Phase](#), [Maintenance of Protein Location](#), [Signaling Events mediated by VEGFR1 and VEGFR2](#), [Thromboxane A2 Receptor Signaling](#)

Application Details

Application Notes: Approved: WB (1 - 2 µg/mL)

Not recommended for: IHC-P

Comment: Target Species of Antibody: Human

Restrictions: For Research Use only

Handling

Format: Liquid

Concentration: Lot specific

Handling

Buffer:	PBS, 0.2 % gelatin, 0.05 % sodium azide.
Preservative:	Sodium azide
Precaution of Use:	This product contains Sodium azide: a POISONOUS AND HAZARDOUS SUBSTANCE which should be handled by trained staff only.
Handling Advice:	Avoid repeat freeze-thaw cycles.
Storage:	4 °C,-20 °C
Storage Comment:	Short term: 4°C. Long term: Store at -20°C. Avoid freeze-thaw cycles.

Images

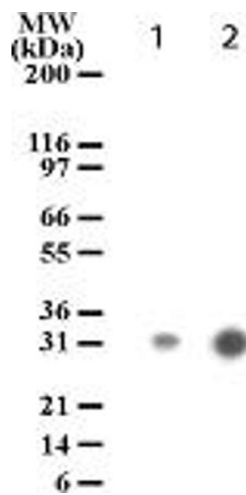


Image 1.