

Datasheet for ABIN208047
anti-TLR6 antibody (AA 408-424)



[Go to Product page](#)

1 Image

Overview

Quantity:	0.1 mg
Target:	TLR6
Binding Specificity:	AA 408-424
Reactivity:	Human
Host:	Mouse
Clonality:	Monoclonal
Conjugate:	This TLR6 antibody is un-conjugated
Application:	Flow Cytometry (FACS)

Product Details

Immunogen:	Synthetic peptide from human TLR6. Type of Immunogen: Synthetic peptide
Clone:	86B1153-2
Isotype:	IgG1
Specificity:	TLR6 (86B1153.2).
Purification:	Protein G purified

Target Details

Target:	TLR6
---------	------

Target Details

Alternative Name: [TLR6 \(TLR6 Products\)](#)

Background: Name/Gene ID: TLR6
Family: Toll-like Receptor

Synonyms: TLR6, CD286 antigen, CD286, Toll-like receptor 6

Gene ID: 10333

UniProt: [Q9Y2C9](#)

Pathways: [TLR Signaling](#), [Activation of Innate immune Response](#), [Cellular Response to Molecule of Bacterial Origin](#), [Toll-Like Receptors Cascades](#)

Application Details

Application Notes: Approved: Flo

Not recommended for: IHC-P

Comment: Target Species of Antibody: Human

Restrictions: For Research Use only

Handling

Format: Liquid

Concentration: Lot specific

Buffer: PBS, 0.2 % gelatin, 0.05 % sodium azide.

Preservative: Sodium azide

Precaution of Use: This product contains Sodium azide: a POISONOUS AND HAZARDOUS SUBSTANCE which should be handled by trained staff only.

Storage: 4 °C, -80 °C

Storage Comment: Short term: 4°C
Long term: -70°C.

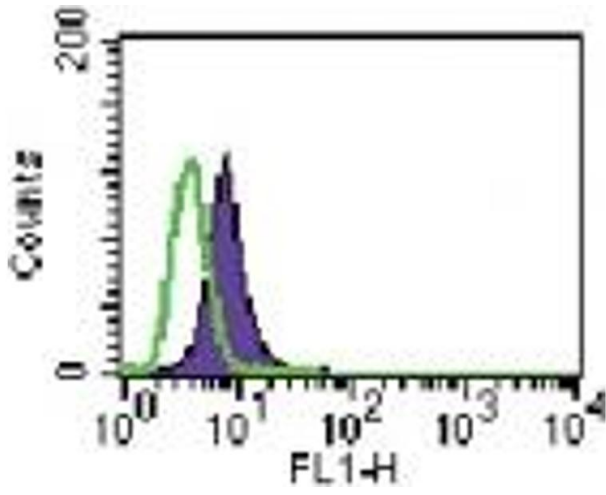


Image 1.