



Datasheet for ABIN208097
anti-MBD1 antibody (AA 391-405)



[Go to Product page](#)

1 Image

Overview

Quantity:	0.1 mg
Target:	MBD1
Binding Specificity:	AA 391-405
Reactivity:	Human, Monkey
Host:	Mouse
Clonality:	Monoclonal
Conjugate:	This MBD1 antibody is un-conjugated
Application:	Western Blotting (WB)

Product Details

Immunogen:	<p>This antibody was generated by immunizing mice with a synthetic peptide corresponding to amino acids 391-405 (SESEDGAGSPPPYRR) of human MBD1, GenBank no ref[NP_056671.2].</p> <p>Percent identity by BLAST analysis: Human, Chimpanzee, Gorilla, Orangutan, Monkey, Marmoset, Tamarin (100%), Gibbon (93%), Horse (87%), Panda (80%).</p> <p>Type of Immunogen: Synthetic peptide</p>
Clone:	100B272-1-
Isotype:	IgG1
Specificity:	<p>There are many isoforms of human MBD1 ranging from 503 (~55kD) to 655 (~71kD) amino acids in length. Researchers are encouraged to use the provided immunogen sequence to determine if this is suitable for testing a specific isoform of interest.</p>

Product Details

Predicted Reactivity:	Percent identity by BLAST analysis: Human, Chimpanzee, Gorilla, Orangutan, Monkey, Marmoset, Tamarin (100%) Gibbon (93%) Horse (87%) Panda (80%).
Purification:	Protein G purified

Target Details

Target:	MBD1
Alternative Name:	MBD1 (MBD1 Products)
Background:	Name/Gene ID: MBD1 Synonyms: MBD1, CXXC3, RFT
Gene ID:	4152
NCBI Accession:	NP_056671
UniProt:	Q9UIS9

Application Details

Application Notes:	Approved: WB (2 µg/mL)
Comment:	Target Species of Antibody: Human
Restrictions:	For Research Use only

Handling

Format:	Liquid
Concentration:	Lot specific
Buffer:	PBS, 0.02 % sodium azide.
Preservative:	Sodium azide
Precaution of Use:	This product contains Sodium azide: a POISONOUS AND HAZARDOUS SUBSTANCE which should be handled by trained staff only.
Storage:	4 °C,-80 °C
Storage Comment:	Short term: 4°C Long term: -70°C.

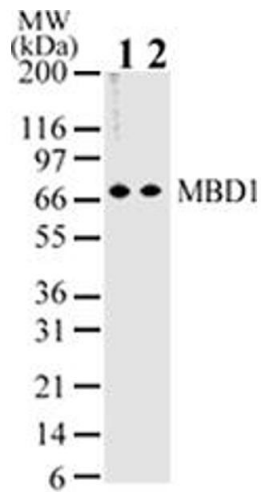


Image 1.