

Datasheet for ABIN208125
anti-HTRA2 antibody (AA 335-350)



[Go to Product page](#)

2 Images

Overview

Quantity:	0.1 mg
Target:	HTRA2
Binding Specificity:	AA 335-350
Reactivity:	Human
Host:	Mouse
Clonality:	Monoclonal
Conjugate:	This HTRA2 antibody is un-conjugated
Application:	Western Blotting (WB), Immunohistochemistry (IHC)

Product Details

Immunogen:	Synthetic peptide from human HTRA2. Type of Immunogen: Synthetic peptide
Clone:	196C429
Isotype:	IgG1
Specificity:	This does not cross-react with mouse Htra2.
Purification:	Protein G purified

Target Details

Target:	HTRA2
---------	-------

Target Details

Alternative Name:	HTRA2 / OMI (HTRA2 Products)
Background:	Name/Gene ID: HTRA2 Subfamily: Serine S1C Family: Protease Synonyms: HTRA2, HtrA-like serine protease, OMI, PARK13, Protease, serine, 25, PRSS25, Serine protease 25, HtrA serine peptidase 2, Serine proteinase OMI
Gene ID:	27429
UniProt:	O43464
Pathways:	Positive Regulation of Endopeptidase Activity

Application Details

Application Notes:	Approved: IHC, WB (2 - 3 µg/mL) Not recommended for: IHC-P
Comment:	Target Species of Antibody: Human
Restrictions:	For Research Use only

Handling

Format:	Liquid
Concentration:	Lot specific
Buffer:	PBS, 0.05 % sodium azide, 0.2 % gelatin.
Preservative:	Sodium azide
Precaution of Use:	This product contains Sodium azide: a POISONOUS AND HAZARDOUS SUBSTANCE which should be handled by trained staff only.
Storage:	4 °C, -80 °C
Storage Comment:	Short term: 4°C Long term: -70°C.

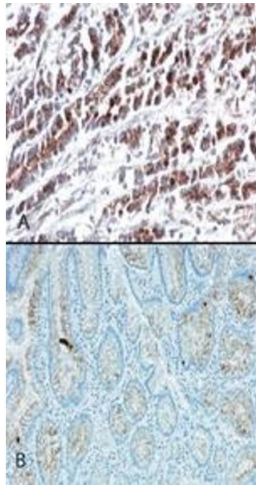


Image 1.

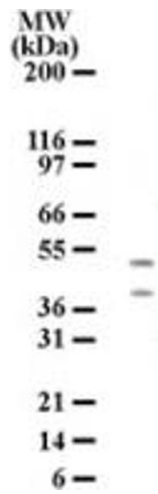


Image 2.