



Datasheet for ABIN208216 **anti-ANTXR1 antibody (AA 481-497)**



[Go to Product page](#)

1 Image

Overview

| | |
|----------------------|---------------------------------------|
| Quantity: | 0.1 mg |
| Target: | ANTXR1 |
| Binding Specificity: | AA 481-497 |
| Reactivity: | Human, Dog, Rabbit, Monkey |
| Host: | Mouse |
| Clonality: | Monoclonal |
| Conjugate: | This ANTXR1 antibody is un-conjugated |
| Application: | Western Blotting (WB) |

Product Details

| | |
|--------------|--|
| Immunogen: | <p>This monoclonal antibody was developed by immunizing mice with a synthetic peptide containing amino acids 481-497 (CINFTRVKNNQPAKYPL) of human TEM8. Percent identity by BLAST analysis: Human, Gorilla, Gibbon, Monkey, Marmoset, Dog, Panda, Rabbit (100%), Mouse, Rat, Bat, Elephant, Pig (94%), Horse, Opossum (88%).</p> <p>Type of Immunogen: Synthetic peptide</p> |
| Clone: | 200C1339(SB20) |
| Isotype: | IgG1 |
| Specificity: | TEM8 is observed at ~80 kD in western blots of HUVEC cells (Hotchkiss et al, 2005) and as an 80 kD and 85 kD double in human colon cell lysates (Nanada et al, 2004). The size difference is thought to be due to glycosylation as a 70 kD band was seen when cell extracts in Nanda et al |

Product Details

(2004) were treated with a glycosidase cocktail. Nanda et al (2004) note a passage dependent loss of TEM8 in HUVEC suggesting that that TEM8 may be a specific marker of the endothelial cell (EC) phenotype which is lost as primary EC's age in culture and de-differentiate.

Predicted Reactivity: Percent identity by BLAST analysis: Human, Gorilla, Gibbon, Monkey, Marmoset, Dog, Panda, Rabbit (100%) Mouse, Rat, Bat, Elephant, Pig (94%) Horse, Opossum (88%).

Purification: Protein G purified

Target Details

Target: ANTXR1

Alternative Name: ANTXR1 / TEM8 / ATR ([ANTXR1 Products](#))

Background: Name/Gene ID: ANTXR1

Synonyms: ANTXR1, Tumor endothelial marker 8, Anthrax toxin receptor 1, TEM8

Gene ID: 84168

UniProt: [Q9H6X2](#)

Application Details

Application Notes: Approved: WB (1 - 3 µg/mL)

Comment: Target Species of Antibody: Human

Restrictions: For Research Use only

Handling

Format: Liquid

Concentration: Lot specific

Buffer: PBS, 0.2 % gelatin, 0.05 % sodium azide.

Preservative: Sodium azide

Precaution of Use: This product contains Sodium azide: a POISONOUS AND HAZARDOUS SUBSTANCE which should be handled by trained staff only.

Storage: 4 °C, -80 °C

Storage Comment: Short term: 4°C

Long term: -70°C.

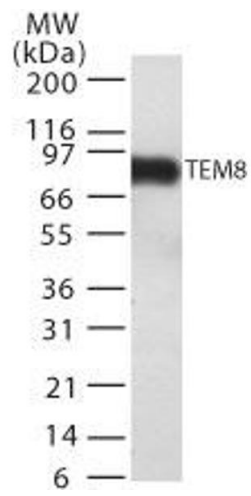


Image 1.