

Datasheet for ABIN208231
anti-TLR5 antibody (AA 700-800)



[Go to Product page](#)

3 Images

Overview

Quantity:	0.1 mg
Target:	TLR5
Binding Specificity:	AA 700-800
Reactivity:	Human, Mouse
Host:	Mouse
Clonality:	Monoclonal
Conjugate:	This TLR5 antibody is un-conjugated
Application:	Western Blotting (WB), Immunohistochemistry (IHC), Flow Cytometry (FACS), Immunohistochemistry (Frozen Sections) (IHC (fro))

Product Details

Immunogen:	Synthetic peptide from human TLR5. Type of Immunogen: Synthetic peptide
Clone:	19D759-2
Isotype:	IgG2a
Specificity:	KLH-conjugated synthetic peptide corresponding to a portion of human TLR5 between amino acids 700-800. The antibody also reacts with mouse TLR5.
Purification:	Protein G purified

Target Details

Target:	TLR5
Alternative Name:	TLR5 (TLR5 Products)
Background:	Name/Gene ID: TLR5 Family: Toll-like Receptor Synonyms: TLR5, TIL3, Toll-like receptor 5, SLEB1
Gene ID:	7100
UniProt:	O60602
Pathways:	TLR Signaling, Activation of Innate immune Response, Cellular Response to Molecule of Bacterial Origin, Toll-Like Receptors Cascades

Application Details

Application Notes:	Approved: Flo, IHC, IHC-Fr (10 µg/mL), WB (1 - 3 µg/mL) Not recommended for: IHC-P
Comment:	Target Species of Antibody: Human
Restrictions:	For Research Use only

Handling

Format:	Liquid
Concentration:	Lot specific
Buffer:	PBS, 0.2 % gelatin, 0.05 % sodium azide.
Preservative:	Sodium azide
Precaution of Use:	This product contains Sodium azide: a POISONOUS AND HAZARDOUS SUBSTANCE which should be handled by trained staff only.
Storage:	4 °C, -80 °C
Storage Comment:	Short term: 4°C Long term: -70°C.

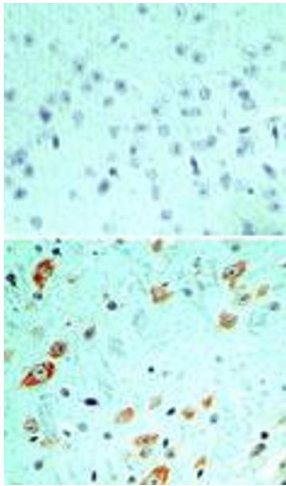


Image 1.

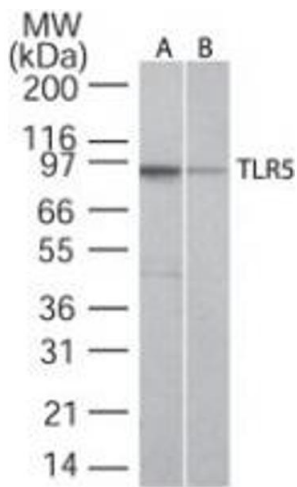


Image 2.

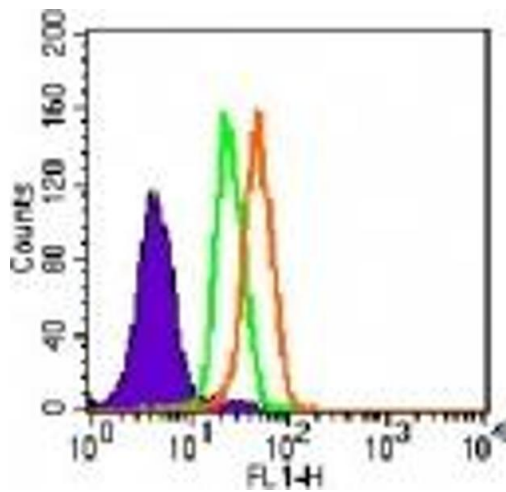


Image 3.