



Datasheet for ABIN208517  
**anti-RAP1 antibody (AA 212-235)**



[Go to Product page](#)

1 Image

Overview

Quantity:	0.1 mg
Target:	RAP1 (TERF2IP)
Binding Specificity:	AA 212-235
Reactivity:	Human
Host:	Rabbit
Clonality:	Polyclonal
Conjugate:	This RAP1 antibody is un-conjugated
Application:	Western Blotting (WB)

Product Details

Immunogen:	Synthetic peptides corresponding amino acids 212-235 of human Rap1. Type of Immunogen: Synthetic peptide
Isotype:	IgG
Specificity:	Synthetic peptides corresponding amino acids 212-235 of human Rap1 was used to immunize rabbits.
Purification:	Protein G purified

Target Details

Target:	RAP1 (TERF2IP)
Alternative Name:	TERF2IP / RAP1 ( <a href="#">TERF2IP Products</a> )

## Target Details

---

Background:	Name/Gene ID: TERF2IP
	Synonyms: TERF2IP, DRIP5, HRap1, RAP1, RAP1 homolog
Gene ID:	54386
UniProt:	<a href="#">Q9NYB0</a>
Pathways:	<a href="#">Cell Division Cycle</a> , <a href="#">Telomere Maintenance</a>

## Application Details

---

Application Notes:	Approved: WB (2 µg/mL)
Comment:	Target Species of Antibody: Human
Restrictions:	For Research Use only

## Handling

---

Format:	Liquid
Concentration:	Lot specific
Buffer:	PBS, 0.02 % sodium azide + 50 % glycerol.
Preservative:	Sodium azide
Precaution of Use:	This product contains Sodium azide: a POISONOUS AND HAZARDOUS SUBSTANCE which should be handled by trained staff only.
Handling Advice:	Avoid repeat freeze-thaw cycles.
Storage:	4 °C, -20 °C
Storage Comment:	Short term: 4°C. Long term: Store at -20°C. Avoid freeze-thaw cycles.

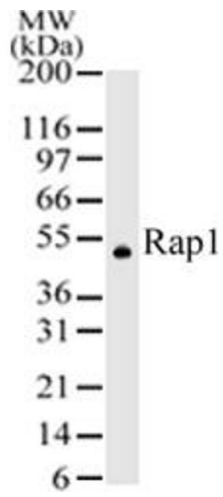


Image 1.