



[Go to Product page](#)

Datasheet for ABIN208588

anti-MBD1 antibody (AA 98-113)

1 Image

Overview

Quantity:	0.1 mg
Target:	MBD1
Binding Specificity:	AA 98-113
Reactivity:	Human
Host:	Rabbit
Clonality:	Polyclonal
Conjugate:	This MBD1 antibody is un-conjugated
Application:	Western Blotting (WB)

Product Details

Immunogen:	This antibody was developed by immunizing rabbits with a mixture of synthetic peptides corresponding to amino acids 98-113 (RQVGPQSGEVRKEAPR) and 391-405 (SESEDGAGSPPPYRR) of human MBD1, GenBank no ref NP_056671.2 . Percent identity by BLAST analysis: Human, Chimpanzee, Gorilla, Orangutan, Gibbon, Monkey (100%), Marmoset (94%), Dog (88%), Bovine, Pig (81%). Type of Immunogen: Synthetic peptide
Isotype:	IgG
Specificity:	A mixture of synthetic peptides corresponding to amino acids 98-113 and 342-356 of human MBD1.
Predicted Reactivity:	Percent identity by BLAST analysis: Human, Chimpanzee, Gorilla, Orangutan, Gibbon, Monkey

Product Details

(100%) Marmoset (94%) Dog (88%) Bovine, Pig (81%).

Purification: Protein G purified

Target Details

Target: MBD1

Alternative Name: MBD1 ([MBD1 Products](#))

Background: Name/Gene ID: MBD1

Synonyms: MBD1, CXXC3, RFT

Gene ID: 4152

NCBI Accession: [NP_056671](#)

UniProt: [Q9UIS9](#)

Application Details

Application Notes: Approved: WB (2 µg/mL)

Comment: Target Species of Antibody: Human

Restrictions: For Research Use only

Handling

Format: Liquid

Concentration: Lot specific

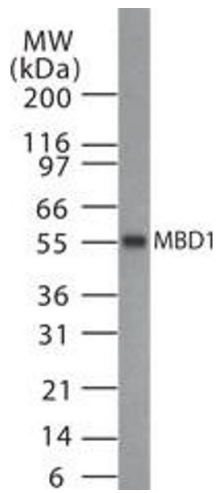
Buffer: PBS, 0.02 % sodium azide.

Preservative: Sodium azide

Precaution of Use: This product contains Sodium azide: a POISONOUS AND HAZARDOUS SUBSTANCE which should be handled by trained staff only.

Storage: 4 °C, -80 °C

Storage Comment: Short term: 4°C
Long term: -70°C.



Western Blotting

Image 1.