



[Go to Product page](#)

Datasheet for ABIN208611
anti-TLR12 antibody (AA 700-800)

2 Images

Overview

Quantity:	0.1 mg
Target:	TLR12 (Tlr12)
Binding Specificity:	AA 700-800
Reactivity:	Mouse
Host:	Rabbit
Clonality:	Polyclonal
Conjugate:	This TLR12 antibody is un-conjugated
Application:	Western Blotting (WB), Flow Cytometry (FACS)

Product Details

Immunogen:	This antibody was developed against a synthetic peptide corresponding to amino acids of 743-756 (RVWLQGLRGKGDKG) of mouse TLR12. Percent identity by BLAST analysis: Mouse (100%). Type of Immunogen: Synthetic peptide
Isotype:	IgG
Specificity:	A portion of amino acids 700-800 of mouse TLR12.
Predicted Reactivity:	Percent identity by BLAST analysis: Mouse (100%).
Purification:	Protein G purified

Target Details

Target:	TLR12 (Tlr12)
Alternative Name:	TLR12 (Tlr12 Products)
Background:	Name/Gene ID: Tlr12 Family: Toll-like Receptor Synonyms: Tlr12, Gm1365, Toll-like receptor 12
Gene ID:	384059
UniProt:	Q6QNU9
Pathways:	Activation of Innate immune Response

Application Details

Application Notes:	Approved: Flo, WB (5 µg/mL) Not recommended for: IHC-P
Comment:	Target Species of Antibody: Mouse
Restrictions:	For Research Use only

Handling

Format:	Liquid
Concentration:	Lot specific
Buffer:	PBS, 0.2 % gelatin, 0.05 % sodium azide.
Preservative:	Sodium azide
Precaution of Use:	This product contains Sodium azide: a POISONOUS AND HAZARDOUS SUBSTANCE which should be handled by trained staff only.
Handling Advice:	avoid freeze thaw cycles.
Storage:	4 °C,-20 °C
Storage Comment:	Short term 4°C, long term aliquot and store at -20°C, avoid freeze-thaw cycles.

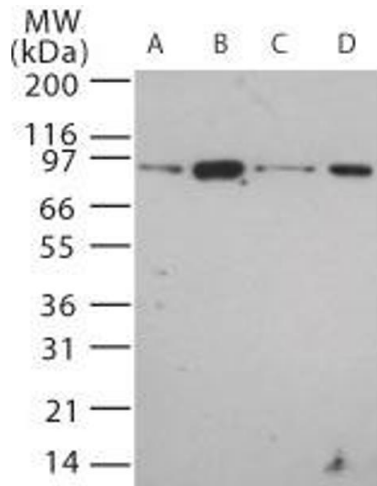


Image 1.

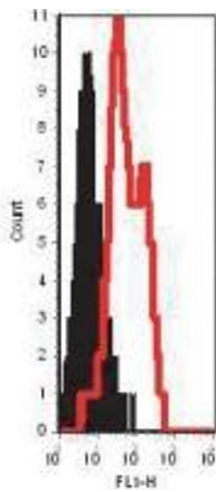


Image 2.