



Datasheet for ABIN208703
anti-PUMA antibody (AA 186-199)



[Go to Product page](#)

2 Images

Overview

Quantity:	100 µg
Target:	PUMA (BBC3)
Binding Specificity:	AA 186-199
Reactivity:	Human
Host:	Rabbit
Clonality:	Polyclonal
Conjugate:	This PUMA antibody is un-conjugated
Application:	Western Blotting (WB), Immunohistochemistry (IHC), Immunohistochemistry (Paraffin-embedded Sections) (IHC (p))

Product Details

Immunogen:	A portion of amino acids 186-199 (PLPRGHRAPEMEPN) of human PUMA a. Percent identity by BLAST analysis: Human, Monkey (100%), Marmoset (93%), Ferret, Panda, Dog, Horse, Pig (86%), Mouse, Rat (79%). Type of Immunogen: Protein fragment
Isotype:	IgG
Specificity:	The amino acid sequence used as immunogen is 100 % homologous in human (PUMA a and b) and 78 % homologous in mouse and rat. Human PUMA a is a 193 amino acid protein with a predicted molecular weight of approximately 22 kD. Human PUMA b is a 131 amino acid protein with a predicted molecular weight of approximately 15 kD.

Product Details

Predicted Reactivity: Percent identity by BLAST analysis: Human, Gibbon (100%) Marmoset (93%) Panda, Horse, Pig (86%).

Purification: Protein G purified

Target Details

Target: PUMA (BBC3)

Alternative Name: PUMA ([BBC3 Products](#))

Background: Name/Gene ID: BBC3
Family: Apoptosis

Synonyms: BBC3, Bcl-2-binding component 3, BCL2 binding component 3, JFY-1, JFY1, PUMA

Gene ID: 27113

UniProt: [Q9BXH1](#)

Pathways: [p53 Signaling](#), [Positive Regulation of Endopeptidase Activity](#)

Application Details

Application Notes: Approved: IHC, IHC-P, WB (1:500 - 1:1000)

Comment: Target Species of Antibody: Human

Restrictions: For Research Use only

Handling

Format: Liquid

Concentration: Lot specific

Buffer: PBS, 0.02 % sodium azide.

Preservative: Sodium azide

Precaution of Use: This product contains Sodium azide: a POISONOUS AND HAZARDOUS SUBSTANCE which should be handled by trained staff only.

Storage: 4 °C, -80 °C

Storage Comment: Short term: 4°C
Long term: -70°C.

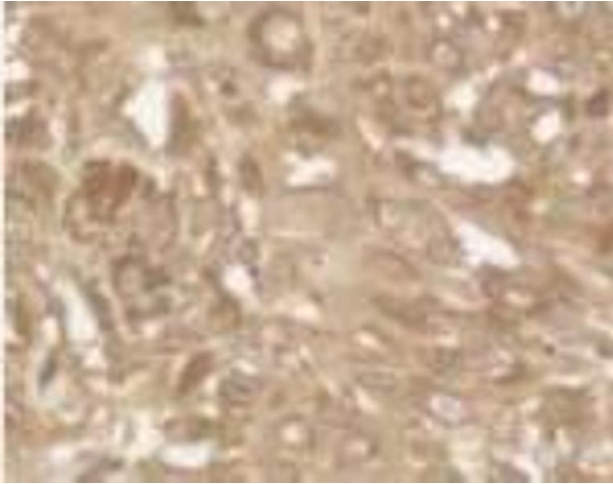


Image 1.

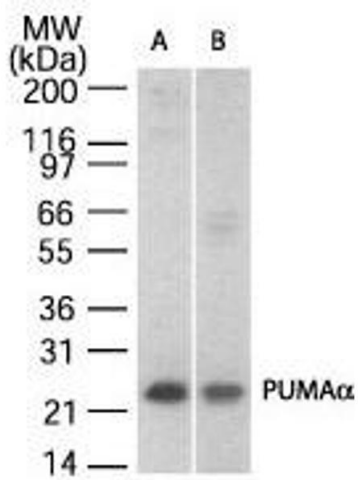


Image 2.