



Datasheet for ABIN208758
anti-SEN2 antibody (AA 500-550)



[Go to Product page](#)

1 Image

Overview

Quantity:	0.1 mg
Target:	SEN2
Binding Specificity:	AA 500-550
Reactivity:	Human, Mouse
Host:	Rabbit
Clonality:	Polyclonal
Conjugate:	This SEN2 antibody is un-conjugated
Application:	Western Blotting (WB)

Product Details

Immunogen:	A portion of amino acids 500-550 of human SEN2. Type of Immunogen: Protein fragment
Isotype:	IgG
Specificity:	A 60 kD band is observed.
Purification:	Protein G purified

Target Details

Target:	SEN2
Alternative Name:	SEN2 (SEN2 Products)

Target Details

Background: Name/Gene ID: SENP2
Subfamily: Cysteine C48
Family: Protease

Synonyms: SENP2, SMT3-specific isopeptidase 2, SMT3IP2, AXAM2, KIAA1331, Sentrin-specific protease 2

Gene ID: 59343

UniProt: [Q9HC62](#)

Pathways: [Chromatin Binding](#)

Application Details

Application Notes: Approved: WB (1:500 - 1:1000)

Comment: Target Species of Antibody: Human

Restrictions: For Research Use only

Handling

Format: Liquid

Concentration: Lot specific

Buffer: PBS, 0.2 % gelatin, 0.05 % sodium azide.

Preservative: Sodium azide

Precaution of Use: This product contains Sodium azide: a POISONOUS AND HAZARDOUS SUBSTANCE which should be handled by trained staff only.

Storage: 4 °C, -80 °C

Storage Comment: Short term: 4°C
Long term: -70°C.

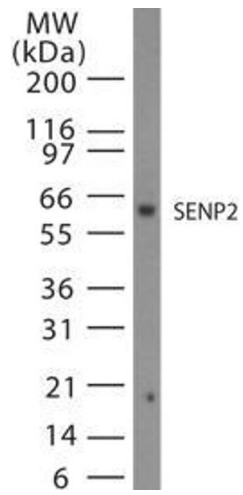


Image 1.