

Datasheet for ABIN208885
anti-TAX1BP1 antibody (AA 700-800)[Go to Product page](#)

1 Image

Overview

Quantity:	0.1 mg
Target:	TAX1BP1
Binding Specificity:	AA 700-800
Reactivity:	Human, Cow, Monkey
Host:	Rabbit
Clonality:	Polyclonal
Conjugate:	This TAX1BP1 antibody is un-conjugated
Application:	Western Blotting (WB)

Product Details

Immunogen:	This antibody was developed against amino acids 718-735 (CSEQFPDQVFERHV) of human Traf6BP. The sequence used is 94% homologous in mouse. Percent identity by BLAST analysis: Human, Gorilla, Orangutan, Gibbon, Monkey, Marmoset, Bovine (100%), Mouse, Rat, Dog, Bat, Hamster, Panda, Horse, Rabbit, Pig, Opossum, Turkey, Chicken (94%), Elephant, Platypus (89%), Xenopus, Pufferfish (83%).
Isotype:	IgG
Specificity:	There are multiple isoforms of TRAF6BP ranging from 590 amino acids to 858 amino acids. Researchers are encouraged to titer for their specific applications.
Predicted Reactivity:	Percent identity by BLAST analysis: Human, Gorilla, Orangutan, Gibbon, Monkey, Marmoset, Bovine (100%) Mouse, Rat, Dog, Bat, Hamster, Panda, Horse, Rabbit, Pig, Opossum, Turkey, Chicken (94%) Elephant, Platypus (89%) Xenopus, Pufferfish (83%).

Product Details

Purification: Protein G purified

Target Details

Target: TAX1BP1

Alternative Name: T6BP / TAX1BP1 ([TAX1BP1 Products](#))

Background: Name/Gene ID: TAX1BP1

Synonyms: TAX1BP1, CALCOCO3, T6BP, Tax1-binding protein 1, TRAF6-binding protein, TXBP151

Gene ID: 8887

UniProt: [Q86VP1](#)

Pathways: [TLR Signaling](#)

Application Details

Application Notes: Approved: WB (2 µg/mL)

Comment: Target Species of Antibody: Human

Restrictions: For Research Use only

Handling

Format: Liquid

Concentration: Lot specific

Buffer: PBS, 0.2 % gelatin, 0.05 % sodium azide.

Preservative: Sodium azide

Precaution of Use: This product contains Sodium azide: a POISONOUS AND HAZARDOUS SUBSTANCE which should be handled by trained staff only.

Handling Advice: Avoid repeat freeze-thaw cycles.

Storage: 4 °C, -20 °C

Storage Comment: Short term: 4°C. Long term: Store at -20°C. Avoid freeze-thaw cycles.

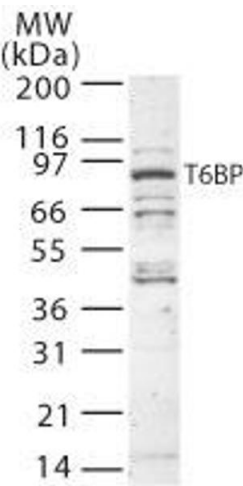


Image 1.